

September 20, 2011 Special Public Board Meeting 2.1

To: The Board of Trustees

From: Joan Carr
Superintendent

Originators: Ron Chomyc Boris Radyo
Assistant Superintendent Assistant Superintendent

Barry Devlin Louise Ripley
Assistant Superintendent Executive Director, Office of the Superintendent

Carole Karbonik
General Counsel

RE: Clareview High School Completion Centre
Acceptance of Successful Tender Bid

On Tuesday, June 29th, 2011, the Board of Trustees approved a motion that directed the Chair and Superintendent to execute two agreements – one to govern the construction of the Clareview High School Completion Centre and the second, a lease of the facility by the District from the City of Edmonton.

At that time, District administration recommended to the Board of Trustees that the Board meet again to be advised of and approve the acceptance of the successful tender bid for the construction of the Clareview High School Completion Centre. The tender process is now completed and administration is in a position to advise the Board of the results.

The City of Edmonton has provided a tender breakdown for the Clareview High School Completion Centre from the low evaluated bidder, Clark Builders. Prior to receiving the tender bids, District administration estimated the project cost at \$12,060,000.00. The tender submission by Clark Builders now puts the total project cost at \$11,619,825.00, meaning that the total project cost is lower than anticipated by \$440,175.00.

Recommendation

It is recommended that the Board of Trustees approves the acceptance of the tender bid by Clark Builders for the Clareview High School Completion Centre.

Attachment 1

Edmonton Catholic Schools is proposing to construct a High School Completion Centre at the District school site in Clareview. The establishment of a High School Completion Centre at the Clareview school site would provide services to students who need access to educational services to complete their high school requirements, to increase their grade twelve course marks or to take additional courses to further their education at post secondary institutions. Educational services to the students will be delivered in many forms - online, in a classroom environment or self paced.

Transportation is often a barrier for students. They require a location close to their place of residence or within an accommodating transportation system. This proposed location allows easy access for students through the ETS and LRT systems. The north side location was chosen for several reasons including; access to transportation (extension of the LRT to the south side), more students requiring the educational services reside on the north side of the river and the opportunity of a unique partnership with the City of Edmonton.

To construct this new High School Completion Centre, Edmonton Catholic Schools is proposing to enter into a partnership with the City of Edmonton. The new High School Completion Centre would be physically connected to the Clareview Recreation Centre, thereby eliminating the need for a gym at the high school as the students would have access to the fitness elements in the Recreation Centre. Additionally the students would have direct access to a new Public Library proposed to be constructed on the south end of the Recreation centre. To address some of the multi-cultural needs in the Clareview neighbourhood that the City has identified, there would be opportunity to rent space in the high school to accommodate these needs.

This proposed partnership will demonstrate to the community that partnerships are important in sharing fiscal responsibility and providing a unified service delivery model to the citizens of the City of Edmonton. This partnership would include Edmonton Catholic Schools, the City of Edmonton, Alberta Education and Alberta Infrastructure.

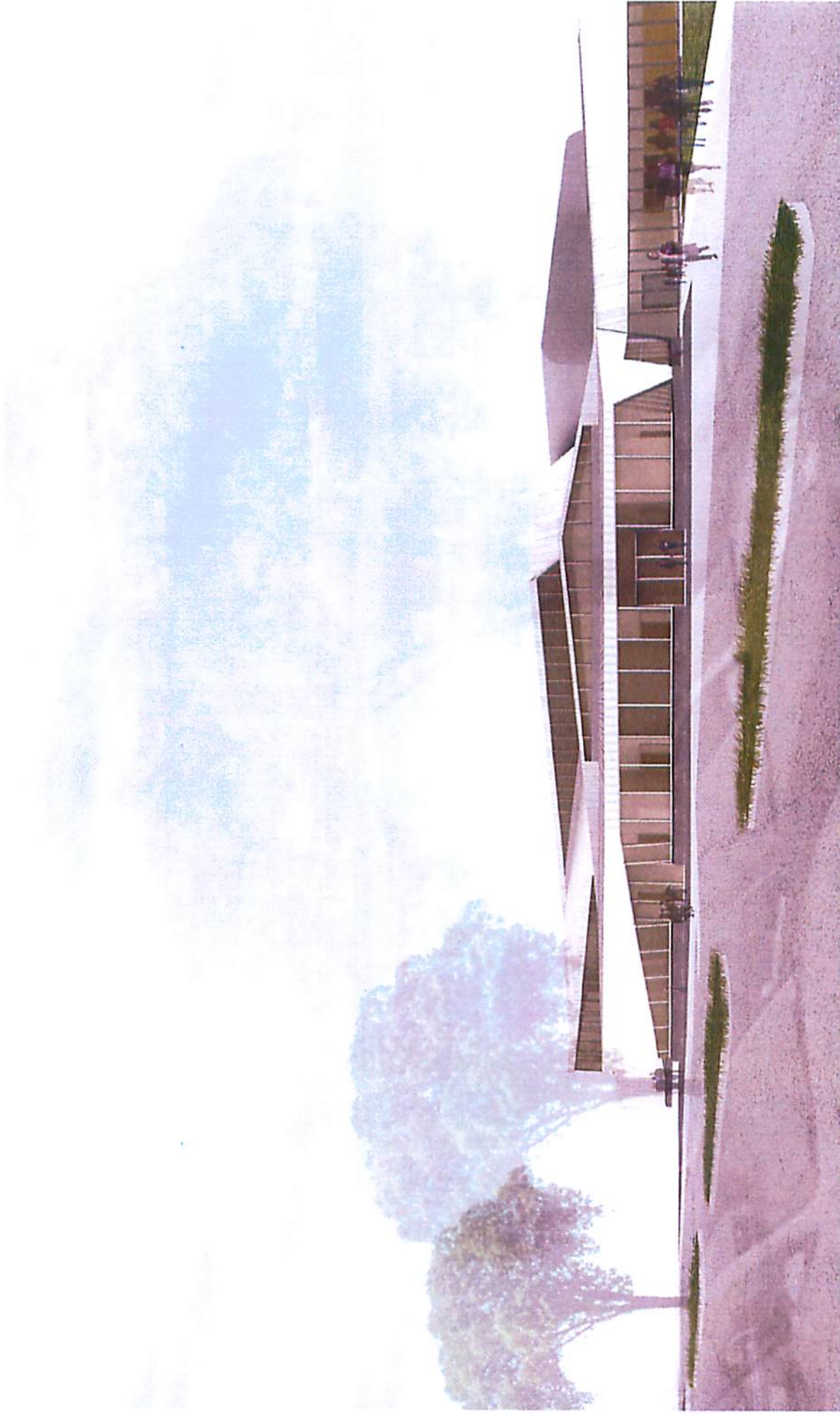


VIEW FROM SOUTH EAST TOWARDS EAST MAIN ENTRANCE

CLAREVIEW HIGHSCHOOL COMPLETION CENTRE AND DAYCARE
EDMONTON, ALBERTA
DECEMBER 07, 2010

Architecture
Arndt Tkalcic Bengert

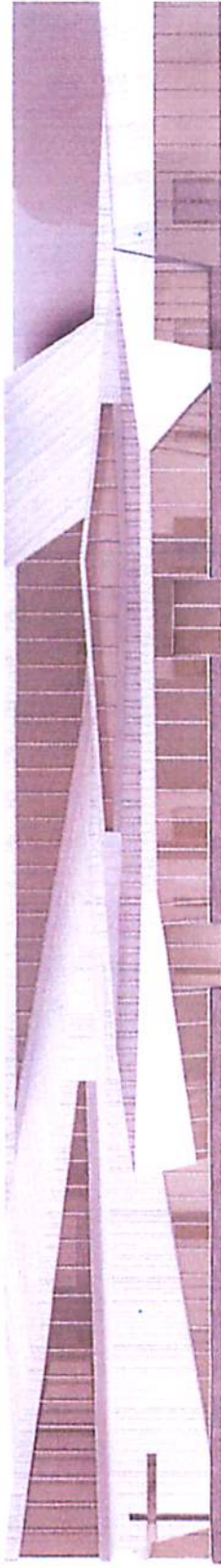
Teeple Architects INC.



CLAREVIEW HIGH SCHOOL COMPLETION CENTRE AND DAYCARE
EDMONTON, ALBERTA
DECEMBER 07, 2010

Architecture
Arndt Tkal/cic Bengert

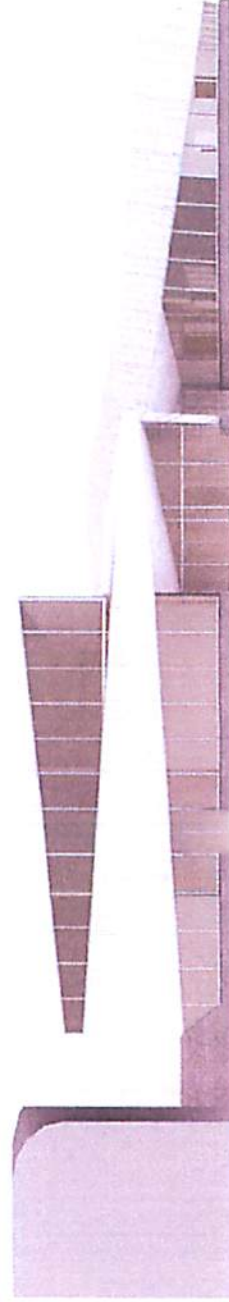
Teeple Architects ^{INC}



NORTH ELEVATION



EAST ELEVATION

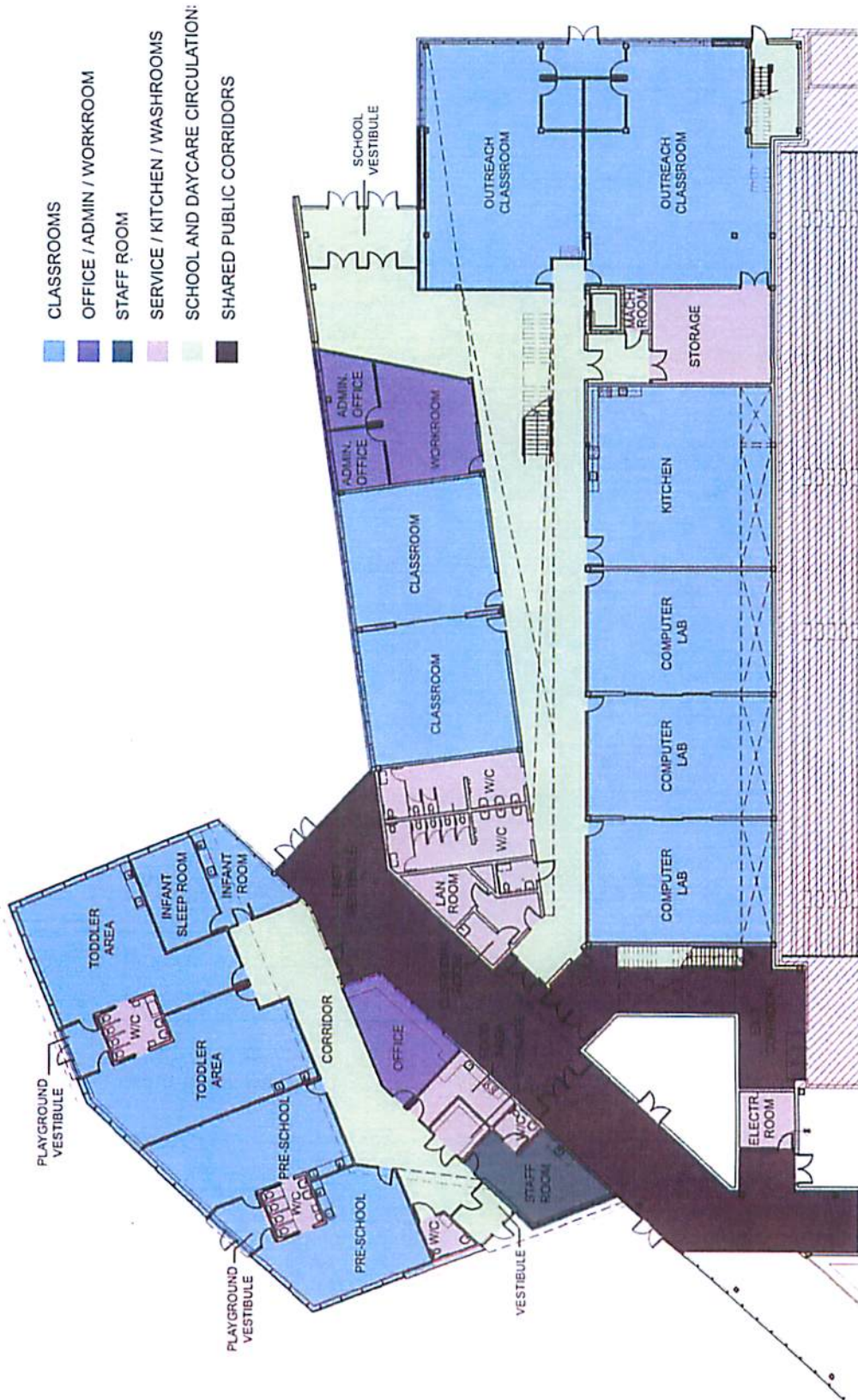


SOUTH ELEVATION
SCALE 1:200

Architecture
Arndt Tka/cic Bengert

CLAREVIEW HIGHSCHOOL COMPLETION CENTRE AND DAYCARE
EDMONTON, ALBERTA
DECEMBER 07, 2010

Teepie Architects^{INC.}



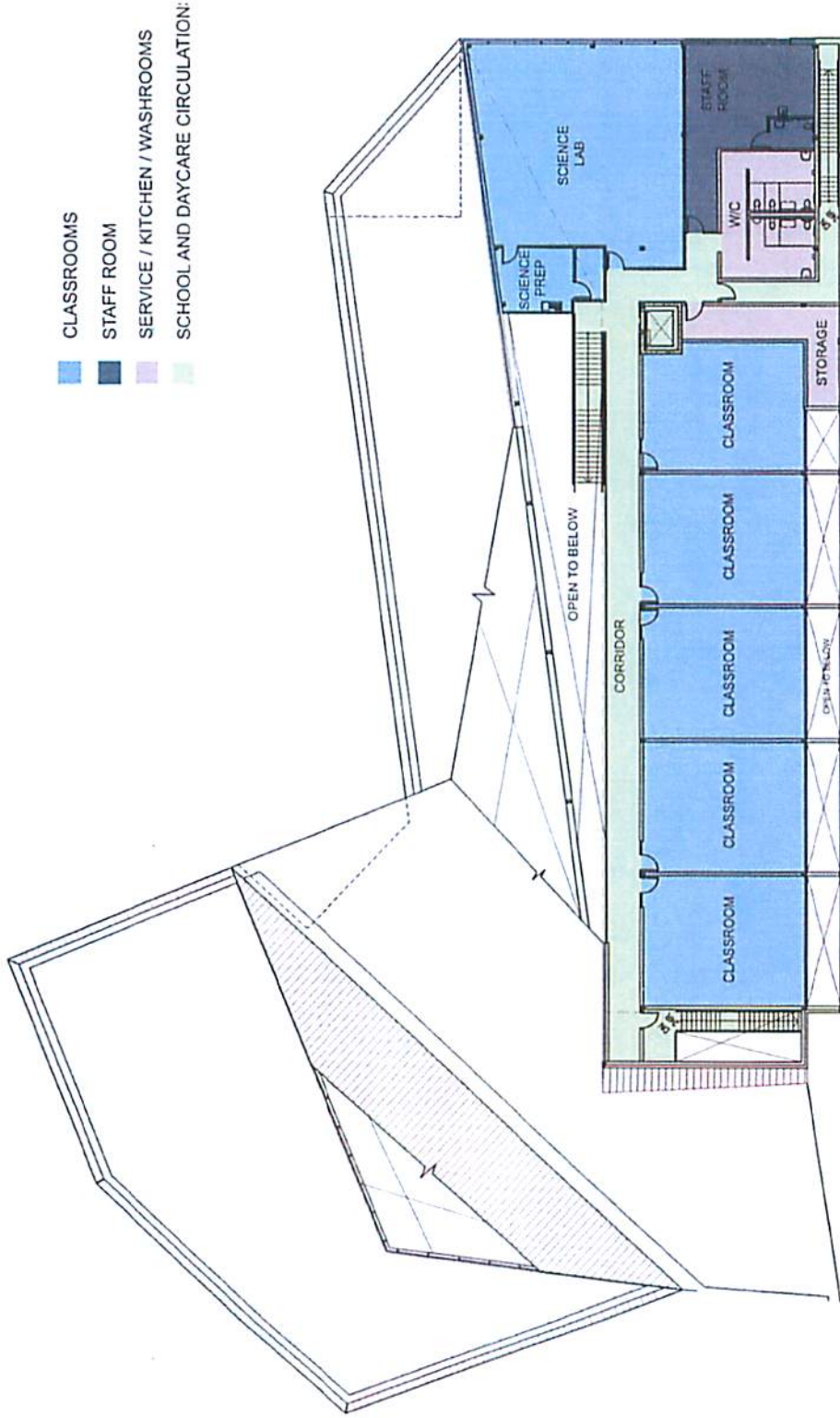
- CLASSROOMS
- OFFICE / ADMIN / WORKROOM
- STAFF ROOM
- SERVICE / KITCHEN / WASHROOMS
- SCHOOL AND DAYCARE CIRCULATION:
- SHARED PUBLIC CORRIDORS

SCALE 1:250 GROUND FLOOR PLAN

CLAREVIEW HIGH SCHOOL COMPLETION CENTRE AND DAYCARE
 EDMONTON, ALBERTA
 DECEMBER 07, 2010

Architecture
 Arndt Tkal/cic Bengert

Teepie Architects INC.



SCALE 1:250 SECOND FLOOR PLAN

CLAREVIEW HIGH SCHOOL COMPLETION CENTRE AND DAYCARE
 EDMONTON, ALBERTA
 DECEMBER 07, 2010

Architecture
 Arndt Tka/c/c Bengert

Teeple Architects
 INC.

CLAREVIEW COMMUNITY
RECREATION CENTRE AND
CLAREVIEW LIBRARY

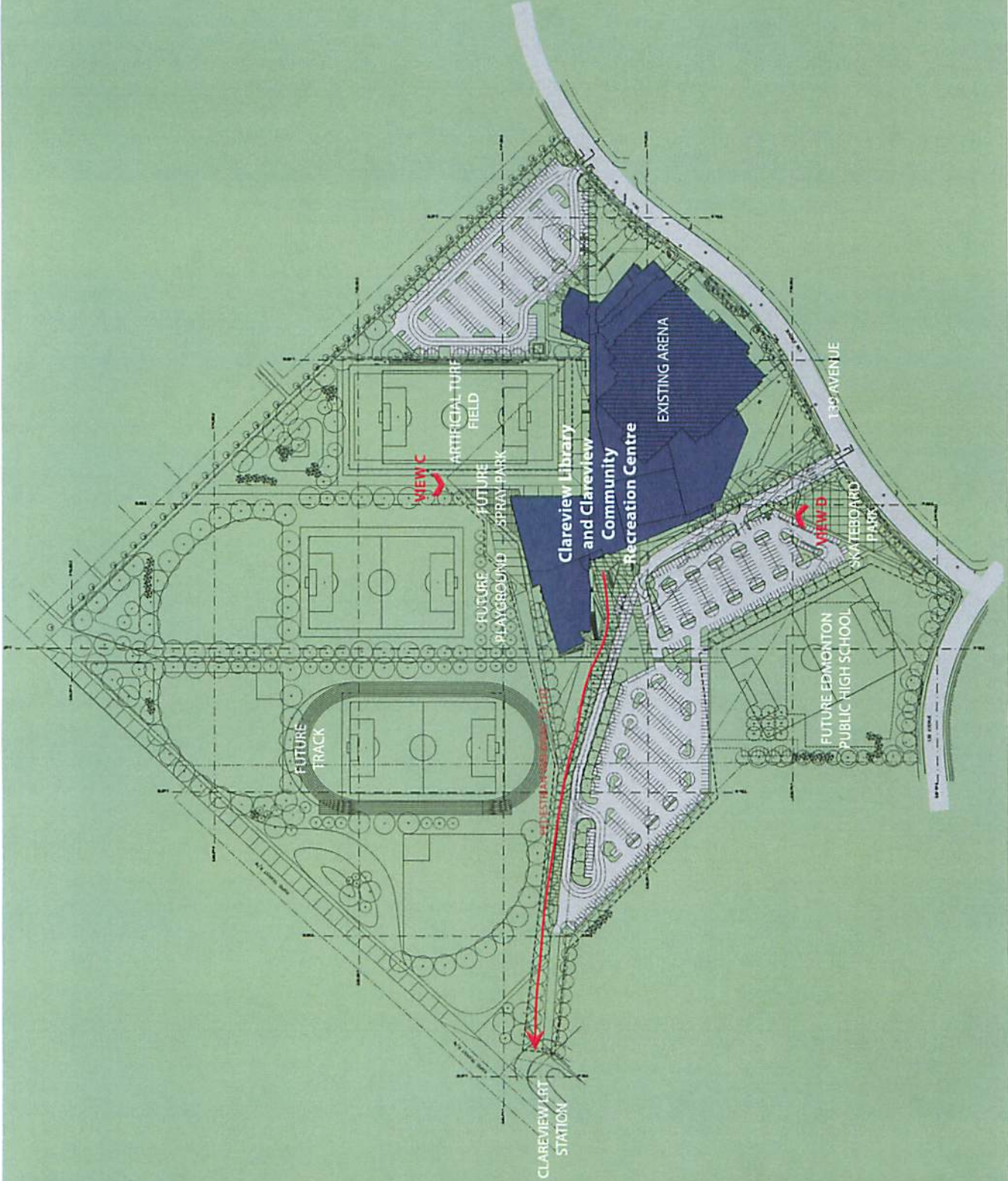
SITE PLAN

N 1:2500

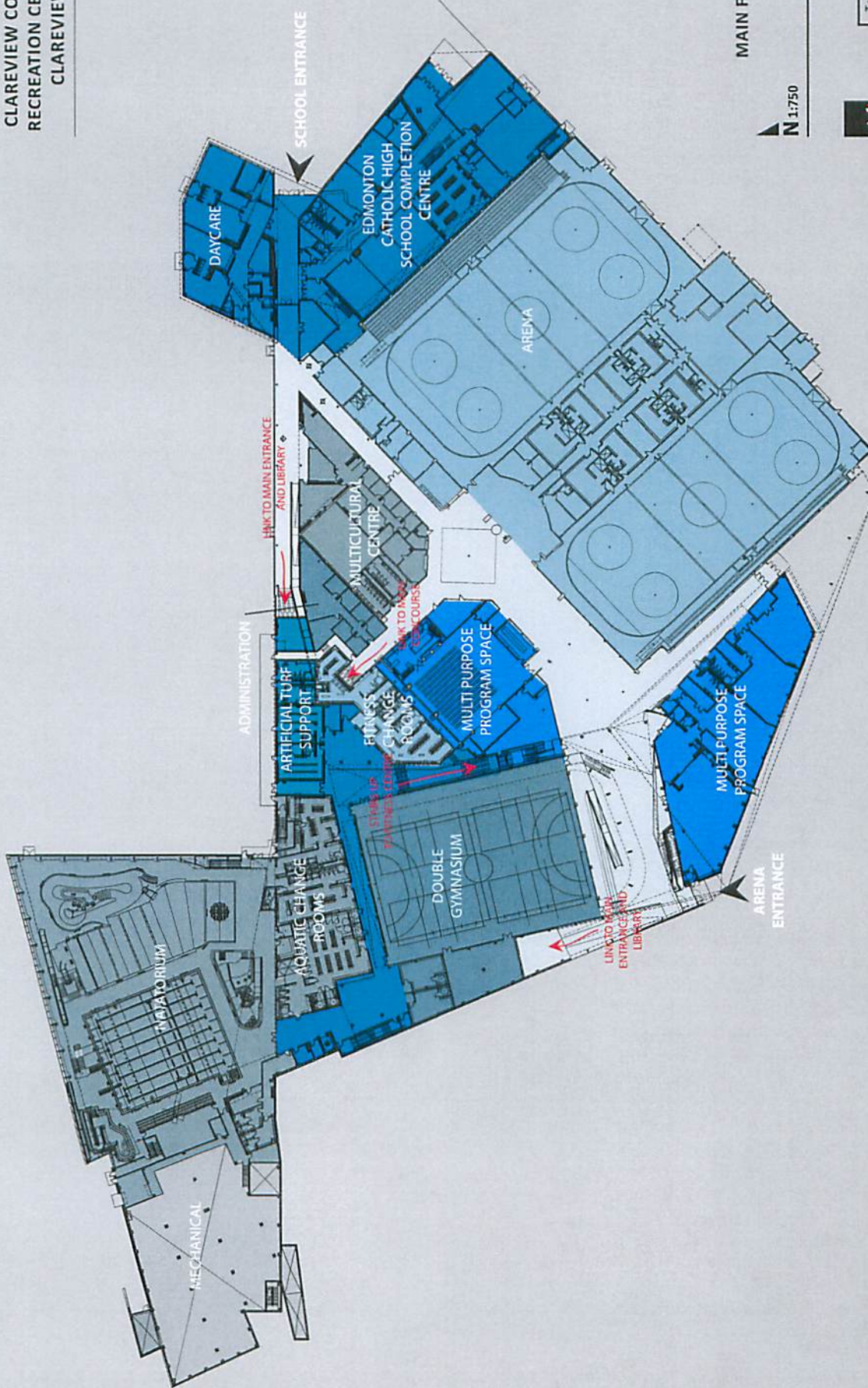


Teople Architects

FEBRUARY 28, 2011



CLAREVIEW COMMUNITY
RECREATION CENTRE AND
CLAREVIEW LIBRARY



MAIN FLOOR PLAN



FEBRUARY 28, 2011