



EDMONTON CATHOLIC SCHOOLS



Sister Annata Brockman

Catholic Elementary/Junior
High School

Grades K-9 Hamptons
West Edmonton | 355 Hemingway Road NW



EDMONTON CATHOLIC SCHOOLS

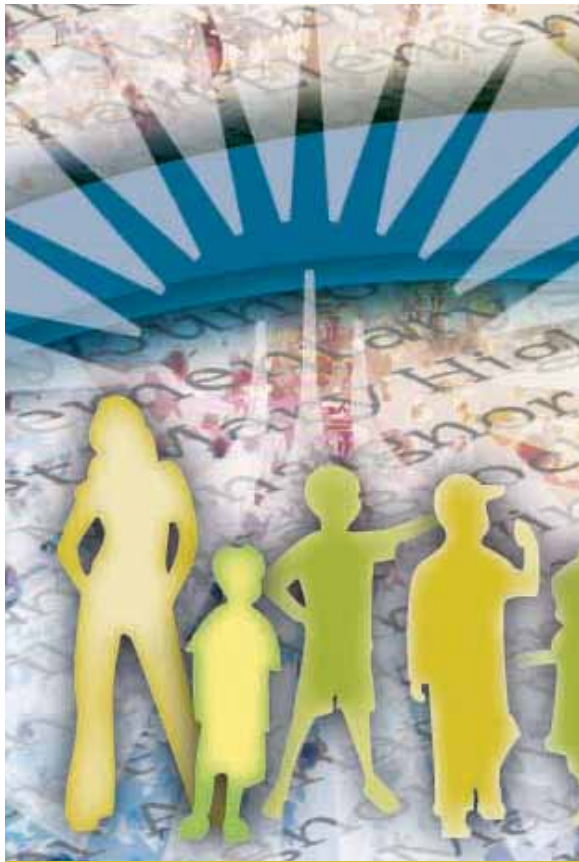
Sister Annata was born in Middle Lake, Saskatchewan in 1927, the eighth in a family of twelve children. Sister Annata has always placed a high value on education, starting with her own. She holds a Bachelor of Arts Degree, a Bachelor of Theology Degree, one Masters Degree in Educational Administration and another in Theology. She became a member of the Sisters of Charity of St. Vincent de Paul (Halifax).

Sister Annata began her teaching career in Nova Scotia and British Columbia, where she taught for 10 years. Then, in 1960, Sister Annata came to Edmonton, where she served our District as a teacher and administrator for 21 years. She was principal at St. Mark, St. Dominic and St. Andrew; Sister Annata was the last religious principal in the District. During this time, she was very active in St. Andrew's Parish.

After retiring from teaching, Sister Annata began another phase of her life as a Pastoral Associate Minister at St. Joseph's Basilica. For two decades, Sister Annata coordinated the RCIA program, bringing Our Lord and His teachings to hundreds of new Catholics in our Archdiocese. She was also responsible for Educational and Sacramental programs for school children, and school tours of the Basilica. In living out her ministry, Sister Annata shared every aspect of pastoral ministry with the Parish Team and the various ministry coordinators.

Over the years, Sister Annata has served on countless Archdiocesan committees and councils. Even today, she continues to be a force in the Archdiocese, tirelessly working long hours visiting sick and terminally ill people, giving a listening ear and a bit of advice to the many who seek it from her, and visiting with young people whenever possible.

In spite of all her accomplishments, Sister Annata is best known as a humble woman who finds the best in each person she meets. She lives out her belief that the Holy Spirit is truly alive in every person! The epitome of a truly spiritual and devout disciple of Christ, Sister Annata inspires all who know her to more fully embrace Our Lord.



Sister Annata Brockman Catholic Elementary/ Junior High School

Fact Sheet

Grades K - 9

Location: 355 Hemingway Road NW

Capacity: 650 students

Site Specifics

- Flexible design, allowing core pod areas to be easily modified and respond to different teaching methods (i.e. project based learning, team teaching, individualized instruction, etc.),
- Provides educational resources to all classrooms (break-out rooms, activity space, curriculum/storage/project workrooms),
- Increased area for Physical Education,
- Maximizes daylight to all areas,
- Opening to the school core that allows for a gathering area that can be used for Religious celebrations and school performances,
- Provides for easy expansion capabilities,
- Site is designed to accommodate play apparatus and hard surface courts on the adjacent field,
- Size: 3418 squares metres.

Safety Features

- Secure entry points to the school that allows modification for community and after hours use,
- Safe and clear access to school bus loading, play areas and parking,
- Administration area adjacent to main entrance in clear view of school entrance.

Programming

- Site plan includes space for Food Studies, Fabrication Studies and Information and Communication Technology Studies,
- Regular Elementary/Junior High programming,
- Computer Lab will be built on-site,
- Access to small instructional spaces such as break-out rooms for individualized instruction, testing and small group work,
- Access to a project centre with space for unique project work as well as specialty classes such as music and art,
- Library will incorporate a combination of open and focused learning areas.

FLOOR PLAN



SITE PLAN



Growing in the
SPiRiT