



STEERING COMMITTEE MEMBERS

Edmonton Public Schools
Brian Fedor; Michael Ediger

Edmonton Catholic Schools
Mike Pieters; Frank Omoe

Edmonton Community Services
Rob Smyth; Tim McCargar

Joint Use Coordinator
Ann McCluskey
Phone: 496-3090
Fax: 496-4942
jointuse@edmonton.ca
www.edmonton.ca/jointuse



Joint Use News

FALL 2004 Edition

Joint Use News is published by the Joint Use Agreement Steering Committee and circulated to the three partners and all joint use school and City recreation facility user groups.

The Joint Use Agreement (JUA) is a legal agreement between the City of Edmonton, Edmonton Public Schools and Edmonton Catholic Schools that makes schools available to community groups in after-school hours and arenas, pools and other City facilities available to school children during school hours.

JUA Review Launched

Review of the Joint Use Agreement was launched on October 25 with a full day workshop to lay out the scope of the review. Each of the three parties is represented by three delegates, who will work with a pair of consultants to achieve the review objectives.

Steering Committee Update

Our sincere thanks to Brian Fedor who has served us well as Chair of the Steering Committee for the past three years. Brian has been a role model for collaboration. The principles of the agreement have guided his leadership to the benefit of us all. (And it's been a fun time!) Thanks Brian.

Thanks also to Michael Ediger, who effectively stepped into the Chair when Brian was overloaded with his many other roles.

Congratulations and good wishes to Tim McCargar as he steps into Brian's shoes. We look forward to benefiting from Tim's organizational skills, his dedication to measuring success, and building on the communication and promotion strategies.

School and Recreation Facilities

The new chair of the School and Recreation Facilities Sub-Committee is Gerry Harland from Edmonton Catholic Schools. Ms. Harland has many years of experience with the JUA and should step in with no difficulty at all. Don Zabloski, Edmonton Public Schools, chaired this committee for so many years that no one can remember when he started - not even Don. Sincere thanks to Don for his years of dedication. Don will continue to represent Edmonton Public on the committee.

This committee is entering a restructuring and will have a representative of a "Program" category user and a "Casual" category user. If you would be interested in learning more about this committee or putting your name forward, please



contact the Joint Use Coordinator at 496-3090 or jointuse@edmonton.ca

Thanks to all who completed the Gymnasium Satisfaction Survey. Your response indicates a high degree of satisfaction with gyms and with the booking process, but also identified areas where service can be improved. The survey will be repeated annually.

A very detailed statistical report on gymnasium demand and availability is in the works and will help us to get a firm handle on the situation. An update will be provided in the next newsletter.

Sports Fields

Community Services and the Sport Field User Committee have been



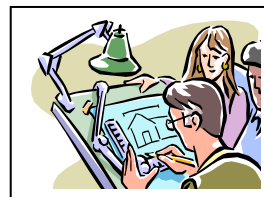
working together to develop a strategy to guide development, allocation and maintenance of

sport fields. The draft strategy will be presented in public meetings early in December. For additional information contact Chris Power at 496-7003.

The Sport Field Strategy will guide much of the work of the Joint Use Sports Fields Committee in 2005.

Site Planning & Facility Design

The torch has been handed over to a new chair at the Site Planning & Facility Design Committee as well. Michael Ediger took over chair of this committee in the spring of 2003 and was instrumental in re-focusing effort on issues that the Agreement can address. Thank you Michael for your leadership and dedication. Congratulations to Rob



Marchak of Community Services who has now assumed this challenging position.

The committee has been hard at work on a Process Alignment Review, looking at all of the activities involved in the acquisition, planning and development of school/park sites. Their efforts are already reaping rewards in clarifying the process for all involved and identifying areas for improvement.

CITY OF EDMONTON PROJECT UPDATES

These projects are highlighted as items of interest to the Joint Use partners.

Urban Parks Management Plan

The Urban Parks Management Plan team has completed an extensive research and consultation process and is currently preparing the first draft of their report. The draft plan will be shared with the Joint Use partners and other stakeholders early in 2005.

An offshoot of the project is initiation of a Public Spaces Strategy, a corporate-wide effort that will look at how the city will plan for all of its public spaces efficiently and effectively. The strategy will address “non-park” public spaces such as roadway rights-of-way, utility rights-of-way and public utility lots (stormwater lakes, walkways.)

Additional information on these projects is available from Bob Priebe at 496-4780.

Recreation Facility Master Plan

The Recreation Facility Master Plan 2005-2015 was approved by City Council on August 31, 2004. The Community Services Department is now completing a Program Priorities Assessment for two of the projects listed as short term priorities - the Southwest and North Central Multipurpose Recreation Centres. This assessment will provide the necessary information to allow the projects to move into the design phase. The Community Services Department is also working on funding strategies to support the development and/or redevelopment of facilities identified as priorities in the short term. Also identified in the report is a recommendation that the City of Edmonton develop a gymnasium strategy in cooperation with the Edmonton Public and Edmonton Catholic School Boards.

The Plan is available online at www.edmonton.ca Search for *Recreation Facility Master Plan*

Integrated Pest Management Policy

The City of Edmonton has moved into the next phase of its Integrated Pest Management Program. A public education program will encourage and support Edmontonians in efforts to join the City in reducing pesticide use.

Good Growing Edmonton's main message is "*The City of Edmonton is committed to reducing the amount of pesticides used on public parkland. Here's how you, too, can reduce or eliminate use of pesticides in your yard ... all toward a healthier environment.*"

Additional information is available online at www.edmonton.ca Search for *Good Growing Edmonton*.

Surplus School Sites

Six existing school sites have been declared surplus to school board needs in 2004. This includes the open space portion of five Edmonton Catholic sites (St. Agnes, St. Bede, St. Bride, St. John & St. Rita) and the entire Edmonton Public Cromdale site. Community Services is reviewing these sites and consulting with the communities. Acquisition recommendations are scheduled for Community Services Management Team consideration in November.

PRINCIPLES OF THE JOINT USE AGREEMENT

The Joint Use Agreement is guided by the following principles:

SHARED USE	That school sites and recreation sites, facilities and resources be shared.
COOPERATIVE PLANNING	That school sites and parks and recreation sites, and facilities be co-operatively planned.
CONSULTATION	That the parties to the Agreement undertake ongoing consultation with User Groups during the lifetime of the Agreement.
EFFICIENCY AND EFFECTIVENESS	That the resources of the three parties and User Groups be efficiently used and extended for the maximum benefit of the community.
SHARED COST	That costs associated with the Agreement be fairly shared among the three parties to the Agreement. User groups may have to participate in basic operating costs of facilities, and will be offered the opportunity to purchase or supply enhanced levels of service and to participate in capital improvements.
EQUAL PARTNERSHIP	That there be an equal partnership among the three parties to the Agreement.
RESERVE DEDICATION	That all reserve land and funds generated in lieu of reserve land be used solely for the purposes of school sites and parks and recreation sites.