

Joint Use Agreement Annual Report 2005



Joint Use - Cooperating for Edmonton

PRINCIPLES OF THE JOINT USE AGREEMENT

The Joint Use Agreement is guided by the following principles:

- | | |
|-------------------------------------|--|
| SHARED USE | That school sites and recreation sites, facilities and resources be shared. |
| COOPERATIVE PLANNING | That school sites and parks and recreation sites, and facilities be co-operatively planned. |
| CONSULTATION | That the parties to the Agreement undertake ongoing consultation with User Groups during the lifetime of the Agreement. |
| EFFICIENCY AND EFFECTIVENESS | That the resources of the three parties and User Groups be efficiently used and extended for the maximum benefit of the community. |
| SHARED COST | That costs associated with the Agreement be fairly shared among the three parties to the Agreement. User groups may have to participate in basic operating costs of facilities, and will be offered the opportunity to purchase or supply enhanced levels of service and to participate in capital improvements. |
| EQUAL PARTNERSHIP | That there be an equal partnership among the three parties to the Agreement. |
| RESERVE DEDICATION | That all reserve land and funds generated in lieu of reserve land be used solely for the purposes of school sites and parks and recreation sites. |

Table of Contents

Introduction	1
Feature Focus: Naturescapes	2
Steering Committee Activities and Accomplishments	3
• Committee Composition	
• 2005 Highlights	
• Future Challenges/Priorities for 2006	
Review Team Activities and Accomplishments	5
• Committee Composition	
• 2005 Highlights	
• Future Challenges/Priorities for 2006	
School and Recreation Facilities	6
• Committee Composition	
• 2005 Highlights	
• Future Challenges/Priorities for 2006	
Sports Fields	7
• Committee Composition	
• 2005 Highlights	
• Future Challenges/Priorities for 2006	
Site Planning and Facility Design	9
• Committee Composition	
• 2005 Highlights	
• Future Challenges/Priorities for 2006	
Appendices	
School Park Site Status Changes	i
Facility Use Statistics	ii

Introduction

About the Joint Use Agreement

The Joint Use Agreement (JUA) is a formal agreement of the City of Edmonton, Edmonton Public Schools and Edmonton Catholic Schools. The agreement was initially signed in 1959 and most recently updated in April 1996. It is through the Joint Use Agreement that arenas, pools and other city facilities are available to school children during the school day, schools are available to community groups after school hours, and sports fields are fully utilized by school and community groups. The agreement also guides how the three partners work together to design, build and maintain school and park sites.

The work of the JUA is managed by four committees, supported by a coordinator. The Steering Committee, made up of two representatives from each of the three partners, addresses global issues and provides direction and leadership to three working sub-committees. The sub-committees, each with a specific area of focus, are comprised of representatives from the partners, as well as user groups and community stakeholders. The mandate of the sub-committees is to study and provide recommendations to the Steering Committee on issues relevant to their respective areas.

The JUA is an agreement of principles, focused on collaboration and cooperation. The spirit of the agreement is fully supported by City Council and the two Boards of Trustees.

About This Report

This report covers the period from January 1 to December 31, 2005.

The annual report is targeted to City Council, the Boards of Trustees of the two school districts, and senior management of the partners.

This report provides highlights the activities and accomplishments of the JUA committees, provides statistical information on the use of facilities under the agreement, highlights school/park sites status changes and identifies priorities for 2006.

Feature Focus: Naturescapes

Naturescapes was initiated in 1999 as part of recommendations arising from the Joint Use “Community Action on Greening” report. It outlined a diversity of ideas on naturalization approaches to development and redevelopment of school park sites including outdoor classrooms, gardens, native landscapes, and stewardship projects. A number of greening projects have been successfully supported as a result. In addition, the work has been considerably enhanced through a unique partnership arrangement with Evergreen Canada.

A Naturescapes Think Tank was hosted in October 2005 to create a community of schools with Naturescapes projects. One of the major items of discussion was sharing ideas on sustaining Naturescapes projects, both in the physical sense and as part of the school culture. As follow-up to the Think Tank an electronic “Communities of Practice” working group is being established. Another spin-off is an event planned at Riverdale School to showcase how Naturescapes can be celebrated and used to support curriculum.

Projects at two schools were a focus for 2005: Holyrood and St. Benedict. Holyrood School’s commitment to raising environmental awareness is long-term. They will be creating momentum in the spring by implementing a small pilot project incorporating ways to support the French Immersion and Ukrainian Bilingual programs at the school. At St. Benedict, a significant school ground upgrading project has been initiated including asphalt walking trails, fitness stations and basketball courts. Naturescapes will be incorporated into the project with inclusion of a native plant garden.

In addition to these, the local Evergreen Associate continued work with a number of schools on projects this year including: Ben Calf Robe, St. Brendan, St. Paul, Good Shepherd, Elmwood, King Edward Park, St. Jerome, Riverdale, Windsor Park, Spruce Avenue, and Holy Family. These projects reflect a wide range of Naturescapes initiatives from well-established to some in the planning stages.

Efforts are underway to ensure sustainability. In the meantime, a variety of workshops are slated to be held along with distribution of resources, building the “Community of Naturescapes Schools Practice”, and providing consultation to maximize the outcomes from greening projects.

Steering Committee Activities and Accomplishments

Committee Composition

The Steering Committee is the management group for the JUA. Two members of each partner organization meet monthly to deal with strategic issues, to direct and review the work of the three standing sub-committees, and to monitor progress of their annual work plan.

Current members of the Steering Committee are:

City of Edmonton	Rob Smyth and Tim McCargar
Edmonton Catholic Schools	Mike Pieters and Carmen Somers
Edmonton Public Schools	John Nicoll and Michael Ediger

2005 Highlights

True Sport Community Award

In 2005 Edmonton was awarded the designation of a True Sport Community by Bell Canada. The work of the Joint Use Agreement and following organizations formed the basis for the nomination and subsequent selection of Edmonton for the True Sport Community Award.

- Edmonton Sport Council
- City of Edmonton - Community Investment Grants & Fee Reduction Program
- Edmonton Minor Hockey Association
- Sport Central
- KidSport Edmonton

Storm Water Management

Throughout 2005, the Steering Committee worked with the City of Edmonton Asset Management regarding potential use of school/park sites as storm water retention ponds as part of the City of Edmonton's Flood Prevention program. Earlier work by the Committee, laid the groundwork for the discussions.

Arterial Roadway Levy

In January 2005 a proposal to implement an arterial roadway levy was presented to the Steering Committee. Discussions led to the Transportation and Streets Department recommending to City Council that school boards be exempt from the levy. Ultimately, the levy was not implemented. Discussion on funding of

arterial roadways will continue into 2006 and the Steering Committee will continue to provide input and feedback.

Addressing Issues Related to Access to Schools

Throughout the year, the Steering Committee, along with the School and Recreation Facilities Committee, continued to address issues related to gymnasium demand and availability.

Ongoing work included review of the implementation of fees, data collection and analysis, revisions to Standards of Play and the annual allocation process among others.

Late in 2005 Edmonton Public Schools initiated a consultation on community use of school facilities. Findings were shared with the Joint Use Steering Committee and will become part of the input considered in discussions on renewal of the Agreement.

Field Strategy 2005-2015

With approval of the Field Strategy, the Steering Committee launched a new approach to managing development/redevelopment, allocation, and stewardship/maintenance of sport fields on school/park sites. More information follows in the Sports Fields section of this report starting on page 6.

School/Park Site Status Changes

There was much activity between the Joint Use partners with regards to closed and surplus school sites in 2005. The two school boards closed four schools and declared portions of five school sites surplus to their needs. School Boards are still determining the long term use for closed schools and have not declared these four closed schools surplus to their needs at this time.

The Joint Use Agreement gives the City first right to purchase surplus school sites from the Boards. The City has six months to review sites, consult with community and provide a decision back to the School Board.

In 2005 the City chose to acquire the five surplus sites to ensure communities have sufficient open space to meet departmental standards. The cost to acquire these non-reserve sites from Boards was \$3 million.

The Joint Use partners will continue to manage their land inventory to ensure citizen needs for schools and parks are met. As these need change in the future, the partners will review and adjust their inventories accordingly. School/park site status changes are displayed in a chart in Appendix A.

Review of 1996 Recommendations

An ongoing task of the Steering Committee has been to monitor progress and activity on the recommendations coming out of the last comprehensive review of the Agreement in 1996. This year a more extensive review was undertaken in preparation for the launch of the new review.

Future Challenges/Priorities for 2006

- To manage completion of the Agreement Review.
- To continue to collect consistent data reflecting user demands and trends, and land inventories, and use the information in decision making.
- To further develop and implement the communication plan.
- To complete action planning for implementation of recommendations coming out of the JUA Review.

JUA Review Team: Activities and Accomplishments

A comprehensive review of the JUA was launched late in 2004. To enable the Steering Committee to continue to focus on its mandate, a separate committee was formed to handle the review.

Committee Composition

At the request of the Steering Committee, each partner appointed representatives to the JUA Review Team is as follows:

City of Edmonton	Linda Cochrane, Rob Smyth, Tim McCargar
Edmonton Catholic Schools	Mike Pieters, Garnet McKee, Rick Mooney
Edmonton Public Schools	John Nicoll, Jenise Bidulock, Michael Ediger

2005 Highlights

The Joint Use Agreement Review was launched in October 2004. The Review Team met 12 times throughout 2005. In the initial meetings the committee established the scope of the review, adopted principles for conducting the review, prepared preliminary lists of issues and opportunities, and identified stakeholders.

The focus to date has been on developing and evaluating new models for shared use of facilities. Changing demographics, new focus on health and fitness, evolving schedules of formal schooling, growth in demand for accommodation all put demands on the system. At the same time, the partners are limited in the resources they can put into shared use of facilities.

Future Challenges/Priorities for 2006

Public consultation on shared use will take place early in 2006. During that time the Review Team will launch a process to address governance and land issues. Progress reports will be forwarded to City Council and the Boards of Trustees as work continues.

School and Recreation Facilities Working Sub-Committee: Activities and Accomplishments

Committee Composition

The School and Recreation Committee includes representation from:

- League Sports (Adult and Minor)
- Recreation Programs
- Casual Users
- Edmonton Federation of Community Leagues
- Edmonton Sport Council
- Community Services, City of Edmonton
- Edmonton Catholic Schools
- Edmonton Public Schools

Ongoing Activities

The School and Recreation Committee provides a venue for regular sharing of information among school user groups and the Partners of the JUA. Discussion of procedures and processes related to school bookings and user issues are regularly discussed. The committee is also a venue for addressing issues relating to student access to City facilities.

2005 Highlights

Standards of Play and the Gymnasium Allocation Process were reviewed, as they are each season. Changes made to the process for booking city-wide user groups into gyms were well received by the groups and more efficient for the booking staff.

In terms of school access to City facilities, ongoing consultation continued with Hockey Schools/Academies. The main areas of concern relate to covering the costs for extra floods at unstaffed arenas and to ice allocation. A new initiative was launched to improve communication and understanding between schools and swimming pools. Physical education consultants from both districts are working with pool managers to find better ways to meet both school and City needs. Significant progress has been made.

Future Challenges

Release of the City's Recreation Facilities Master Plan will impact the work of the School and Recreation Facilities Committee in the future. In particular, the recommendation that “..the City should develop a gymnasium strategy in cooperation with Edmonton's School Boards” could become a priority item for the Joint Use Agreement.

Sports Fields Working Sub-Committee: Activities and Accomplishments

Committee Composition

With approval of the Field Strategy 2005-2015, the compositions and mandate of the Sports Fields Committee were expanded. A rectangular field users group and a diamond users group were established. From each of these groups, representatives for each sport are elected to sit on the Sports Fields Working Sub-Committee.

The committee now includes representation from:

- Baseball
- Cricket
- Football
- Rugby
- Slo-Pitch
- Soccer
- Softball/Fastball
- Track and Field
- Ultimate
- Edmonton Sport Council
- Edmonton Federation of Community Leagues
- Edmonton Catholic Schools
- City of Edmonton Community Services
- Edmonton Public Schools

Ongoing Activities

The Sports Fields Committee provides a venue for regular sharing of information between field user groups and the Joint Use partners. Under the Field Strategy, the mandate of this committee has expanded to include a formal role as representatives of stakeholder and user groups for the City of Edmonton as well as the Joint Use Agreement. The endeavors of the committee has changed from discussion of procedures and processes related to field bookings, maintenance and operations to a focus on field development/redevelopment, field allocation, and field stewardship.

2005 Highlights

Field Allocation Priorities

The committee reviewed the different categories of demand for use of fields, defined activities and determined the priority order of booking of fields.

Field Standards

A review of standards for all fields was launched. Field dimensions and the heights of backstops and goalposts had not been reviewed for a number of years. Final approval of the new standards is anticipated early in 2006.

Stewardship Focus Group

The committee appointed members to sit on a Stewardship Focus Group with representatives of the City (Parks Operations) to address ongoing questions and

concerns related to maintenance of fields. Significant progress was made through the fall of 2005 with a final report on agreed strategies to address issues coming back to the Sports Fields Committee early in 2006.

Clarke Park

The football field at Clarke Park became officially available for community users to book under the JUA in 2005. Allocation of bookings is now done centrally along with other City fields and the University of Alberta's Foote Field venues.

U of A Foote Field Agreement

Review of the agreement between the City of Edmonton and the University that makes Foote Field venues available for community and school users was launched in 2005. The chair of the Sports Field Committee sits on the review team for the Foote Field Agreement as a direct representative of school and community user groups.

Future Challenges/Priorities for 2006

Dealing with stewardship issues is expected to continue to be a challenge due to financial restraints.

Site Planning and Facility Design Working Sub-Committee: Activities and Accomplishments

Committee Composition

The committee includes representation from:

- Edmonton Public Schools
- Edmonton Catholic Schools
- Community Services, City of Edmonton
- Planning and Development, City of Edmonton
- Urban Development Institute
- Edmonton Sport Council
- Edmonton Federation of Community Leagues

Ongoing Activities

The Site Planning and Facility Design Committee (SPFDC) provides a venue for the Partners to work together to address issues and opportunities related to acquisition of land and the planning and design of school park sites. It also brings stakeholder interest into the discussions. The focus of this committee has shifted from project-based action to information sharing and cooperative planning.

2005 Highlights

The main focus for the SPFDC in 2005 was developing action plans to improve the alignment of civic and school districts' planning processes, addressing issues identified in the Process Alignment Review in 2004.

A number of improvements are now being implemented through collaborative work of staff from both school districts and City departments. Some of the incongruities were referred to the JUA Steering Committee for additional discussion through the Agreement Review process.

Future Challenges/Priorities for 2006

In 2006, work will continue on process re-alignment and on new priorities identified in the Agreement Review process.

APPENDICES

A. School/Park Site Status Changes

B. Facility Use Statistics

Community Use of School Facilities

Gymnasium Use by Age

Sports Field Use on School/Park Sites After School Hours

Sports Field Use by Age

School Use of City Facilities (A)

School Use of City Facilities (B)

A. School/Park Site Status Changes

2005 School/Park Site Status Changes

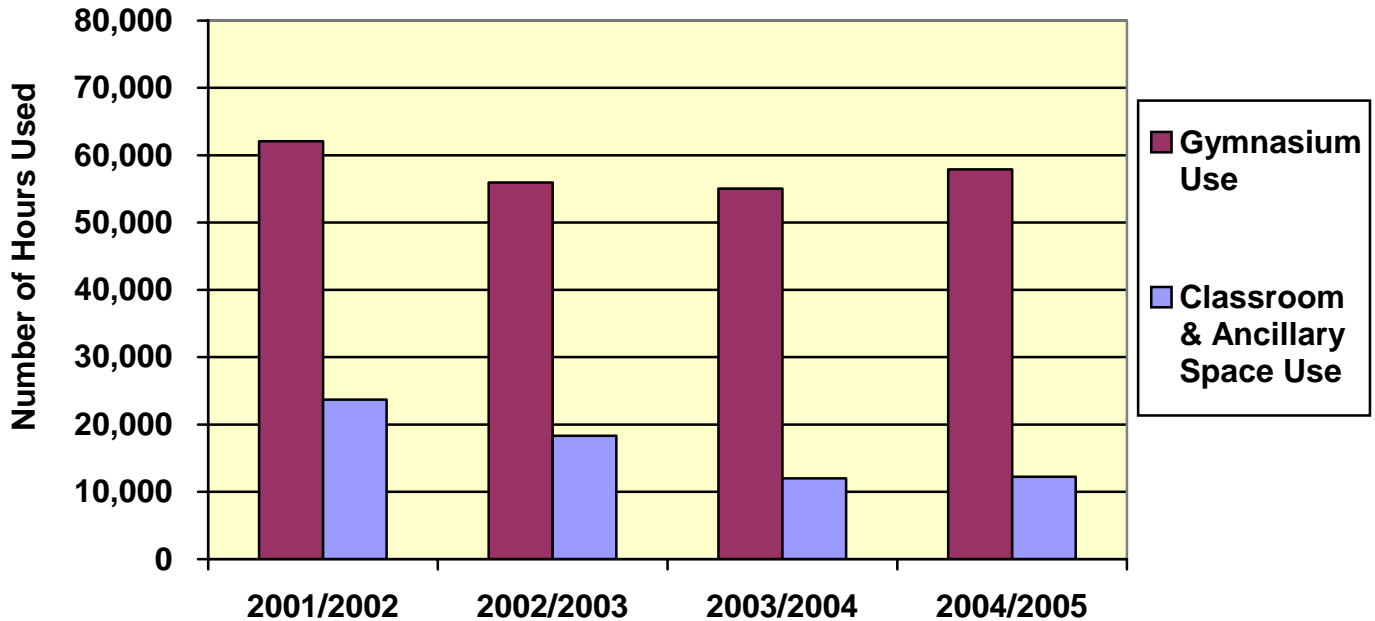
Neighbourhood	School	Land Status	Building Status	Future Plans
Abbotsfield	St. Sophia	Reserve land transferred back to City	City purchased	Continued sports field operation. Building leased to Abbotsfield Recreation Centre.
Allendale	St. Agnes	Non-reserve land. City purchasing	No change	Continued sport field operation
Callingwood	Archbishop Oscar Romero	Reserve land	New school Gym added to inventory	Edmonton Catholic School. Sport field operation
Cromdale	Cromdale	Sold to Capital Health Authority	Sold to Capital Health Authority	Community Health Centre
Dovercourt	St. Rita	Non-reserve City purchasing	No change	Continued sport field operation
Forest Heights	St. Bride	Non-reserve City purchasing	No change	Continued sport field operation
Gold Bar	St. Bede	Non-reserve City purchasing	No change	Continued sport field operation

A. School/Park Site Status Changes

Neighbourhood	School	Land Status	Building Status	Future Plans
Matt Berry		Transferred to Edmonton Society for Christian Education	To be built by the Society and leased to Edmonton Public Schools	EPS will operate the school with a Christian focus. The facility will follow Joint Use guidelines for community access.
Oliver	St. John	Non-reserve City purchasing		Continued sport field operation
Strathearn	Strathearn	Non-reserve sold to Francophone School Board	Operating as Ecole Gabrieille-Roi	All elements of JUA will apply.
Westwood	H.A. Grey	Non-reserve. City purchased portions of site accommodating playground and community league parking.	Sold to a church group	Educational centre

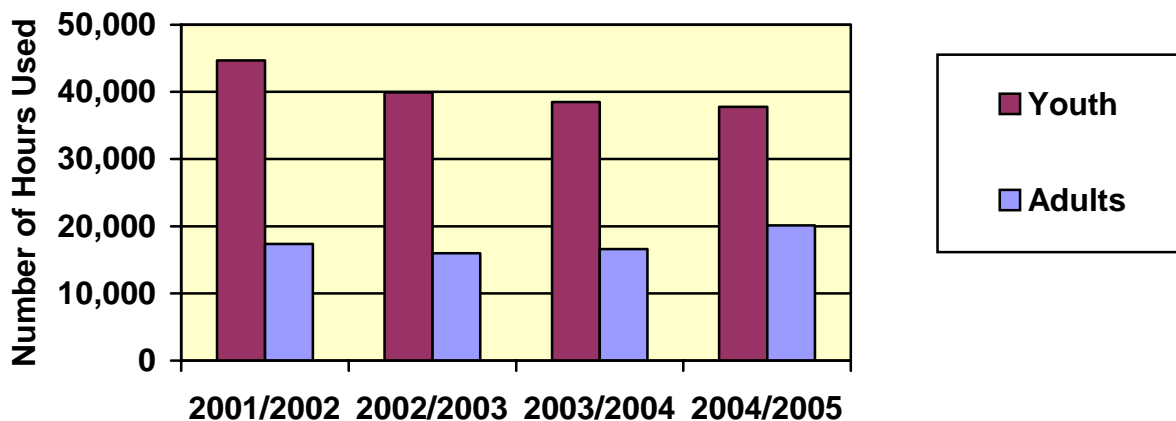
B. Facility Use Statistics

COMMUNITY USE OF SCHOOL FACILITIES



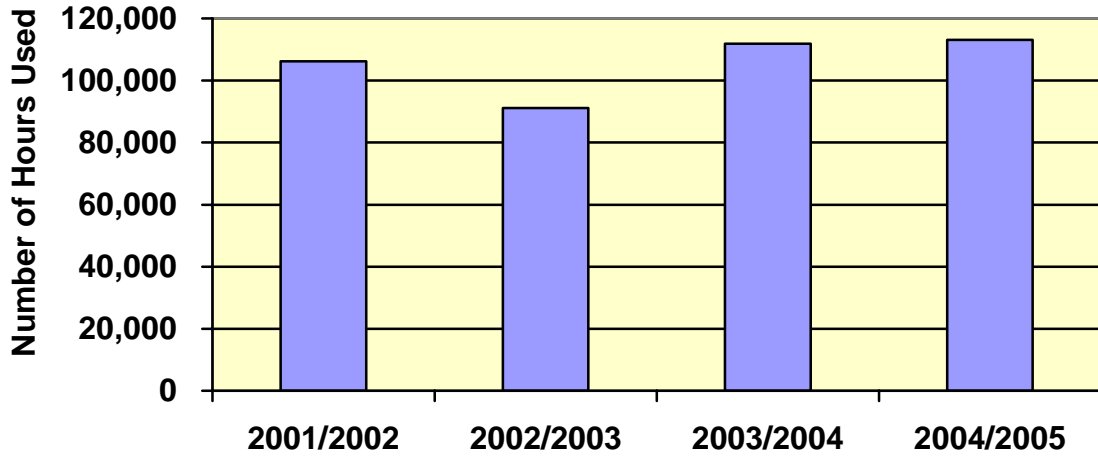
	2001/2002	2002/2003	2003/2004	2004/2005
Gymnasium Hours	62,058	55,912	55,052	57,897
Classroom/Ancillary Space Hours	23,696	18,331	11,969	12,232

GYMNASIUM USE BY AGE



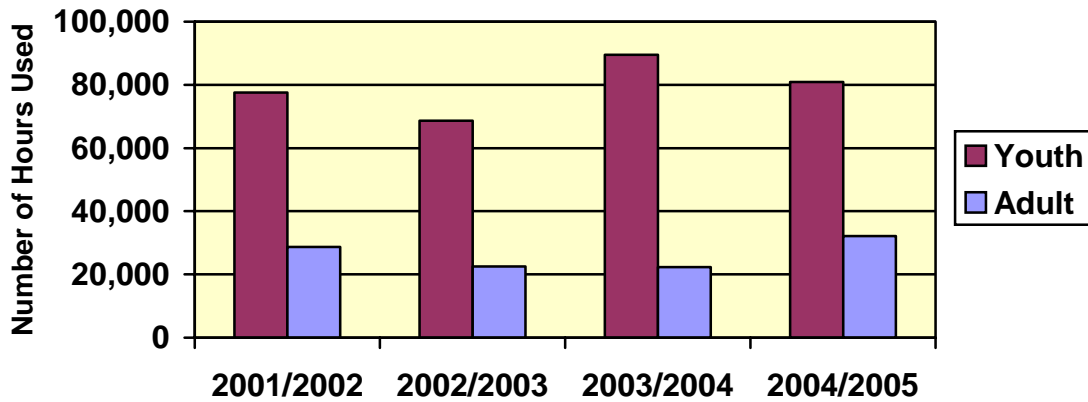
B. Facility Use Statistics

SPORTS FIELD USE ON SCHOOL/PARK SITES AFTER SCHOOL HOURS



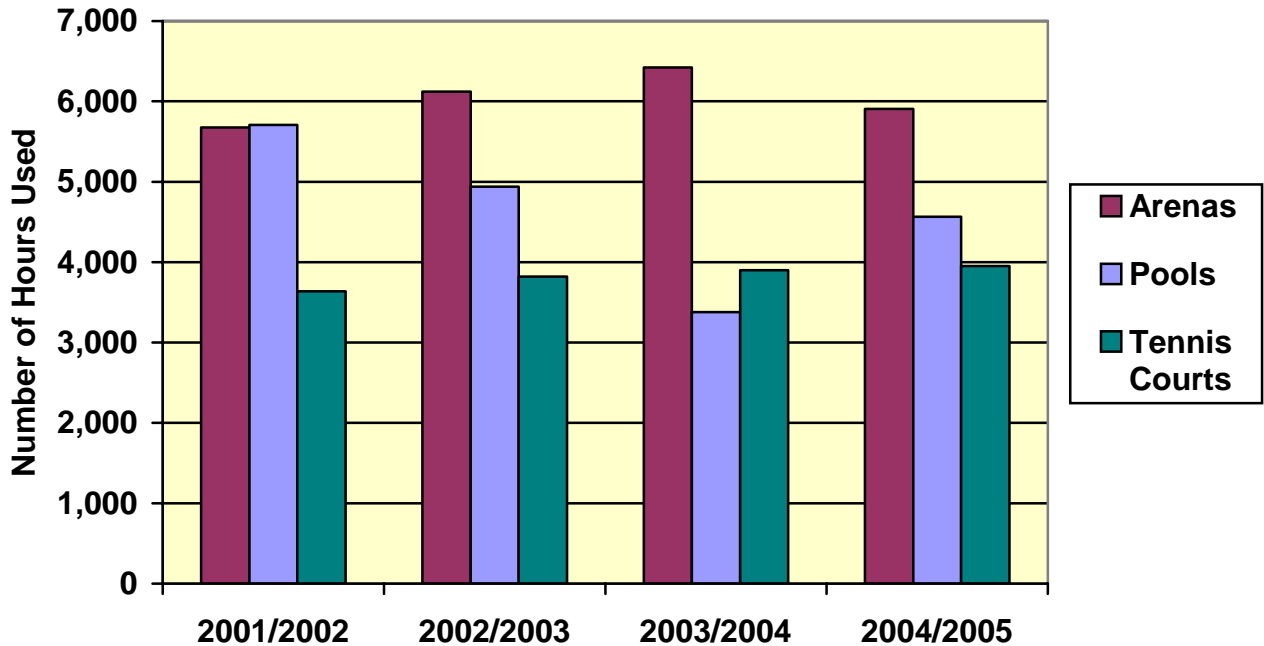
	2001/2002	2002/2003	2003/2004	2004/2005
Hours of Use	106,197	91,127	111,821	113,051

SPORTS FIELD USE BY AGE



B. Facility Use Statistics

SCHOOL USE OF CITY FACILITIES (A)

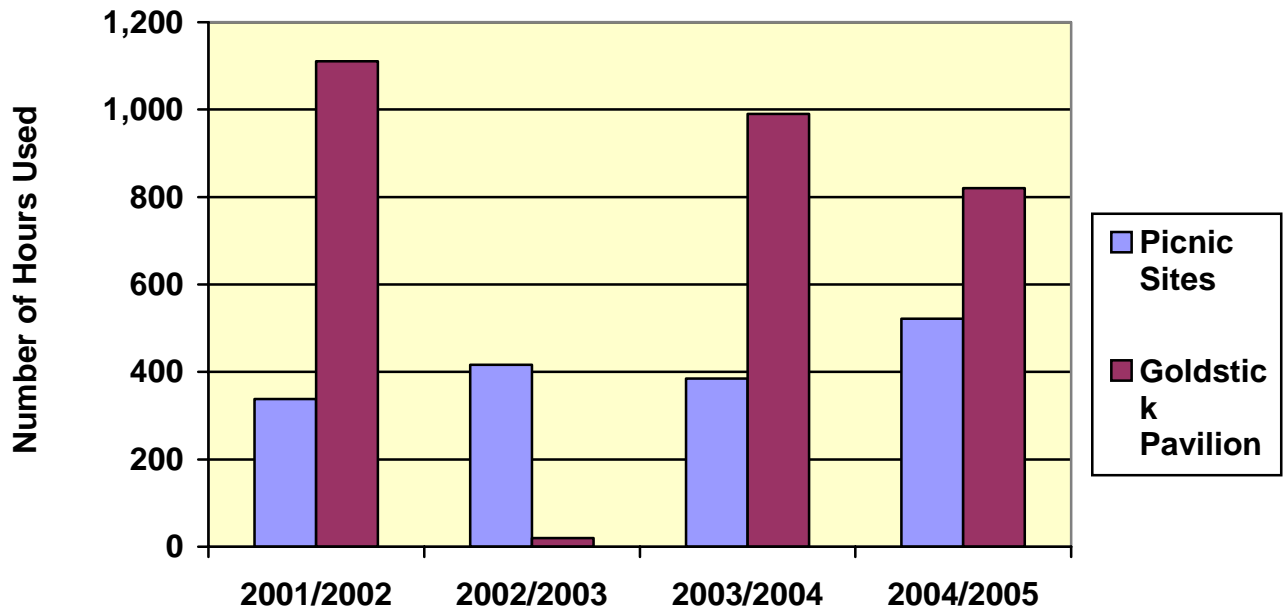


	2001/2002	2002/2003	2003/2004	2004/2005
Arenas	5,676	6,121	6,421	5,905
Tennis Courts	3,636	3,821	3,378	3,951
Pools	5,707	4,937	3,901	4,563

Note: Tennis courts are booked individually. For example if a school booked Grand Trunk Courts for 2 hours, it would be recorded as 3 courts X 2 hours = 6 hours. To more accurately reflect relative usage of facilities, the hours booked have been divided by 4 to represent the number of hours a tennis court facility (2-6 courts) was booked.

B. Facility Use Statistics

SCHOOL USE OF CITY FACILITIES (B)



	2001/2002	2002/2003	2003/2004	2004/2005
Picnic Sites	338	416	385	522
Goldstick Pavilion	1,111	20	990	820

Goldstick Pavilion is primarily booked as a dressing room for winter outdoor activities such as cross-country skiing.