

Joint Use Agreement Annual Report 2003



Joint Use - Cooperating for Edmonton

PRINCIPLES OF THE JOINT USE AGREEMENT

The Joint Use Agreement is guided by the following principles:

SHARED USE

That school sites and recreation sites, facilities and resources be shared.

COOPERATIVE PLANNING

That school sites and parks and recreation sites, and facilities be co-operatively planned.

CONSULTATION

That the parties to the Agreement undertake ongoing consultation with User Groups during the lifetime of the Agreement.

EFFICIENCY AND EFFECTIVENESS

That the resources of the three parties and User Groups be efficiently used and extended for the maximum benefit of the community.

SHARED COST

That costs associated with the Agreement be fairly shared among the three parties to the Agreement. User groups may have to participate in basic operating costs of facilities, and will be offered the opportunity to purchase or supply enhanced levels of service and to participate in capital improvements.

EQUAL PARTNERSHIP

That there be an equal partnership among the three parties to the Agreement.

RESERVE DEDICATION

That all reserve land and funds generated in lieu of reserve land be used solely for the purposes of school sites and parks and recreation sites.

Table of Contents

Introduction	4
About the Joint Use Agreement	
About This Report	
Steering Committee Activities and Accomplishments	6
Review Activities	
Planning for the Future	
Maintain a Broad View and Strategic Focus	
Addressing Arising Issues	
Continued Work on Implementing the Recommendations of the Accessibility Review	
School & Recreation Facilities Working Sub-Committee	8
Committee Composition	
Ongoing Activities	
Accomplishments	
Future Challenges	
Sports Fields Working Sub-Committee	10
Committee Composition	
Ongoing Activities	
Accomplishments	
Future Challenges	
Site Planning & Facility Design Working Sub-Committee ..	11
Committee Composition	
Ongoing Activities	
Accomplishments	
Future Challenges	
Finances.....	13
Future Priorities	13
Appendix: Facility Use Statistics	15

Introduction

About the Joint Use Agreement

The Joint Use Agreement (JUA) is a formal agreement of the City of Edmonton, Edmonton Public Schools and Edmonton Catholic Schools. The agreement was initially signed in 1959 and most recently updated in April 1996. It is through the Joint Use Agreement that arenas, pools and other city facilities are available to school children during the school day, schools are available to community groups after school hours, and sports fields are fully utilized by school and community groups. The agreement also guides how the three partners work together to design, build and maintain school and park sites.

The work of the JUA is managed by four committees, supported by a coordinator. The Steering Committee, made up of two representatives from each of the three partners, addresses global issues and provides direction and leadership to three working sub-committees. The sub-committees, each with a specific area of focus, are comprised of representatives from the partners, as well as user groups and community stakeholders. The mandate of the sub committees is to study and provide recommendations to the Steering Committee on issues relevant to their respective areas.

The JUA is an agreement of principles, focussed on collaboration and cooperation. The spirit of the agreement is fully supported by City Council and the two Boards of Trustees.

About This Report

This report covers the period from January 1 to December 31, 2003.

The annual report is targeted to City Council, the Boards of Trustees of the two school districts, and senior management of the partners.

This report provides highlights the activities and accomplishments of the JUA committees, provides statistical information on the use of facilities under the agreement, reflects on financial investment and implications, compares the situation in Edmonton to other municipalities, and identifies priorities for 2004.

Steering Committee Activities and Accomplishments

The Joint Use Steering Committee faced the challenges and opportunities provided by turnover in 2003. Between December 2002 and October 2003 we said goodbye to four of our six committee members. Our thanks for years of quality contribution go to Doug Costigan, Garnet McKee, George Witt and Bob Steele. We warmly welcome Tim McCargar, Mike Pieters, Rob Smyth and Frank Omoe. The new members bring new skills and vision that will help to shape the future of the Joint Use Agreement.

The focus of the Steering Committee this year has been on reviewing current processes and structures, and a strategic focus on the future. Along with getting the new members oriented to the Agreement, the Steering Committee has addressed a number of areas and has the following successes to share in this report:

Review Activities

- Creation of a document clarifying the roles and responsibilities of the Steering Committee.
- Review of the criteria for being a partner to the Agreement.
- Review of the relationships and linkages between the Steering Committee and sub-committees.

Planning for the Future

- Updating land inventories
- Identifying data needs
- Assessing the potential to incorporate performance indicators
- Working on development of Terms of Reference for review of the Agreement.

Maintaining a Broad View and Strategic Focus

- Monitoring and providing input to the Minister's Symposium on Schools
- Monitoring of Alberta's Commission on Learning
- Providing input to the development of the new City of Edmonton Parks Bylaw.
- Review of the Edmonton Social Plan

Addressing Arising Issues

- Reviewed the status of existing Christian Schools within Edmonton Public Schools, clarifying the variances among sites in terms of the Agreement.
- Developed a web-page to improve existing communication with partners and users. The page can be accessed at <http://edmonton.ca> (search joint use agreement) or at <http://ecsd.net/jua>. There is also a link from Edmonton Public Schools Rentals (Facilities) Services at <http://www.ijus.epsb.net>
- Entered into negotiations with Alberta Infrastructure regarding potential community use of a soccer field at the School for the Deaf.
- Addressed procedural issues for Steering Committee meetings improving overall efficiency and effectiveness.

Continued Work on Implementing the Recommendations of the Accessibility Review

- A special category of user was designated for school district "sport alternative programs" such as hockey schools. These users are eligible for free access to City of Edmonton facilities under the JUA, but will be charged for additional services required such as additional rink flooding in unstaffed arenas.
- The partners also came to agreement regarding school access to certain sports fields after 6:00 p.m. without charge. Users will continue to be charged for extra services such as lights and snow removal. This was a gray area in the past and had a particular impact on the high school football program.
- Work is underway to address to schools and communicate the option for principals to designate Joint Use time between 4:00 and 6:00 p.m.

- A manual is being developed that will collect guidelines and procedures for users and facility operators under the agreement. It will be widely distributed in 2004.
- A process and timelines for annual review of guidelines will also be implemented in 2004.

School and Recreation Facilities Working Sub-Committee: Activities and Accomplishments

Committee Composition

The committee includes representation from:

- Adult Indoor Sports
- Minor Indoor Sports
- Girl Guides of Canada
- Scouts Canada
- Edmonton Federation of Community Leagues
- Edmonton Sport Council
- Community Services, City of Edmonton
- Edmonton Catholic Schools
- Edmonton Public Schools

Ongoing Activities

The School and Recreation Committee provides a venue for regular sharing of information among school user groups and the Partners of the JUA. Discussion of procedures and processes related to school bookings and user issues are regularly discussed. The committee is also a venue for addressing issues relating to student access to City facilities.

Accomplishments

Gymnasium Allocation Process

The Fair and Equitable Allocation Model was approved by the Joint Use Steering Committee in 2003. This model has five major components:

- Calculation of Demand through Standards of Play
- Calculation of Availability as provided by School Districts
- Calculation of Unmet Demand
- Calculation of Entitlement
- Allocation Process

Standards of Play

Work continued in 2003 on refining the Standards of Play which define the amount of time and type of gymnasium required for different activities. A significant change this year was recognizing sport practice as equivalent to play. In the past league games, recreation programs and casual users were booked into gyms first and any remaining time was available for practice slots. This year practice had its own standard of one hour per team per week. Although this increased demand, users were able to book 90% of their standard. Our sincere thanks and congratulations go to this committee for their good work and extra dedication this year.

Future Challenges

The demand for gymnasium time continues to grow as new sports emerge and existing programs expand. An ongoing communication process is required to increase awareness of users as to the limits on meeting demand and to ensure all partners understand their obligations under the JUA.

Standards of Play, the current process for allocation gym time, has its limits. Under Standards of Play, each type of activity is guaranteed their fair share of gym time. In the future, demand may result in an inability to meet all expectations. It may become necessary to make some tough decisions about giving priority to specific activities, age groups, or organizations. A key challenge will be to balance growing demand and expectation with availability.

Sports Fields Working Sub-Committee: Activities and Accomplishments

Committee Composition

The committee includes representation from:

- Cricket
- Minor Baseball
- Minor Tackle Football
- Edmonton Minor Soccer Association
- Edmonton Inter-District Youth Soccer Association
- Edmonton District Soccer Association
- Slo-Pitch
- Youth Softball
- Edmonton Track and Field Council
- Edmonton Rugby Union
- Ultimate Frisbee
- Edmonton Sport Council
- Edmonton Federation of Community Leagues
- U of A South Campus (Foote Field)
- Edmonton Catholic Schools
- Community Services, City of Edmonton
- Edmonton Public Schools

Ongoing Activities

The Sports Fields Committee provides a venue for regular sharing of information between field user groups and the Joint Use partners. Discussion of procedures and processes related to field bookings, maintenance and operations are part of every agenda.

Accomplishments

- Continued monitoring and providing input into the operation of the Agreement between the City of Edmonton and University of Alberta guiding

community access to Foote Field. Four new rectangular fields will be added to the inventory in 2004 through this Agreement.

- Monitored and reviewed progress and recommendations of the Pesticide Advisory Committee.
- Provided ongoing input into the City of Edmonton Field Strategy Redesign Process.
- Continued to monitor and provide input to a variety of initiatives and projects including the proposed development of a multi-sport tournament site, the home base program, potential developments at Henry Singer Park, and a possible artificial turf field at Clarke Park

Future Challenges

The Sports Fields Committee was implemented in 1996 to address issues that arose in the review prior to signing of the current agreement. The committee has had significant success in addressing those issues and now has the opportunity to be pro-active rather than reactive. Action planning for 2004 has not taken place at the time of writing this report, but is expected to include activities of a more strategic nature. As the Field Strategy Redesign Process proceeds additional issues may arise for the committee to deal with.

Site Planning and Facility Design Committee:

Activities and Accomplishments

Committee Composition

The committee includes representation from:

- Edmonton Public Schools
- Edmonton Catholic Schools
- Community Services, City of Edmonton
- Planning and Development, City of Edmonton
- Urban Development Institute
- Edmonton Sport Council

- Edmonton Federation of Community Leagues

Ongoing Activities

The Site Planning and Facility Design Committee provides a venue for the Partners to work together to address issues and opportunities related to acquisition of land and the planning and design of school park sites. It also brings stakeholder interest into the discussions. The focus of this committee has shifted from project-based action to information sharing and cooperative planning.

Accomplishments

- Monitored, evaluated, and provided input to a variety of initiatives and projects including:
 - Urban Parks Management Plan
 - Facilities Master Plan
 - Minister's Symposium on Schools
 - Naturescapes
 - Future School Sites Study
 - Smart Choices for Developing Our Community
 - Public-Private Partnerships
- Shared Capital Development Plans of the partners.
- Developed Terms of Reference for a Process Alignment Review regarding the joint planning of school and park sites.

Future Challenges

The Site Planning and Facility Design Committee will continue to face challenges resulting from decision making outside of the partnership. The provincial government in particular makes decisions that have a significant impact on how school districts and municipalities address land issues.

Finances

The Joint Use Agreement operates on a budget of \$77,000. This includes the costs of a coordinator, hosting of committee meetings, printing, and volunteer appreciation. The costs are shared equally by the three partners.

For this minor investment, the parties are able to provide citizens of Edmonton with far greater access to facilities, at significantly less cost than other municipalities in keeping with our principle “That the resources of the three parties and User Groups be efficiently used and extended for the maximum benefit of the community.”

Future Priorities

In October and November 2003, the Steering Committee undertook a strategic planning exercise and identified the following priorities for 2004:

- To have access to consistent data reflecting user demands and trends, for use in decision making.
- To design and implement a comprehensive communication plan
- To have a shared understanding and agreement on what the plan for review of the agreement will include.
- To have written documents recording agreed roles, responsibilities, structure and communication links for all JUA committees.
- To be aware of strategies and initiatives related to the mandate of the Joint Use Agreement on an ongoing basis.
- Clarify the role of the Joint Use Agreement in relationship to ancillary agreements and initiatives.

Planning for a Review of the Agreement

The current Joint Use Agreement was effective as of October 1, 1995 and is subject to a review after each ten year period. The Joint Use Steering Committee

has commenced initial planning activities to work toward a new agreement. The planning process will include:

Research Phase

- review of the current agreement
- activities and accomplishments since the 1996 signing
- scan of the environment we are now working in
- projected future scenarios
- consultation with the partners
- input from sub-committees

Plan Compilation Phase

- defining outcomes of the new agreement
- identifying key clauses
- reviewing format
- draft agreement

Review Phase

- formal review of the draft by partners and stakeholders
- revisions as required

Reporting Phase

- preparation of the final report
- publication and distribution
- presentations to partners and key stakeholders

Appendix: Facility Use Statistics

Community Use of School Facilities

Gymnasium Use by Age

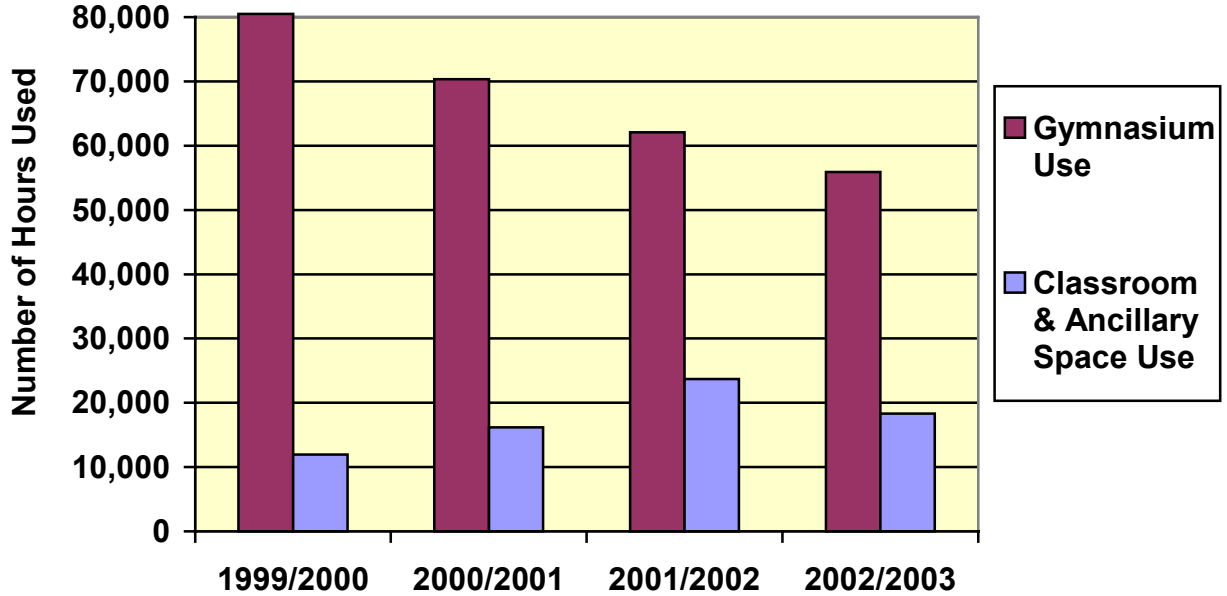
Sports Field Use on School/Park Sites After School Hours

Sports Field Use by Age

School Use of City Facilities (A)

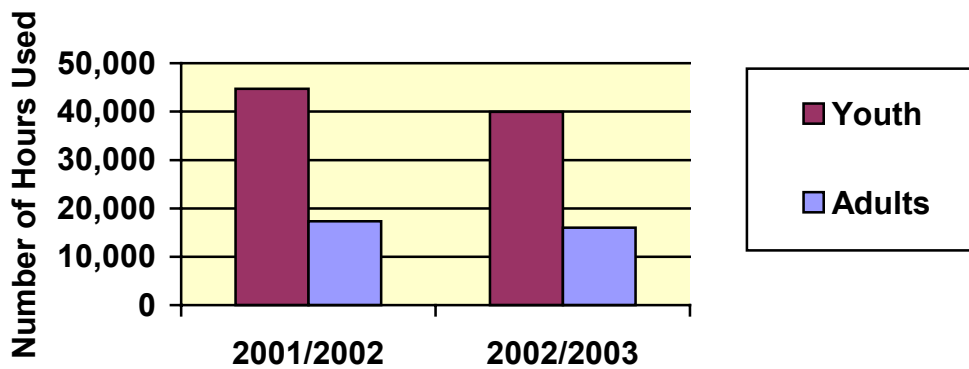
School Use of City Facilities (B)

COMMUNITY USE OF SCHOOL FACILITIES

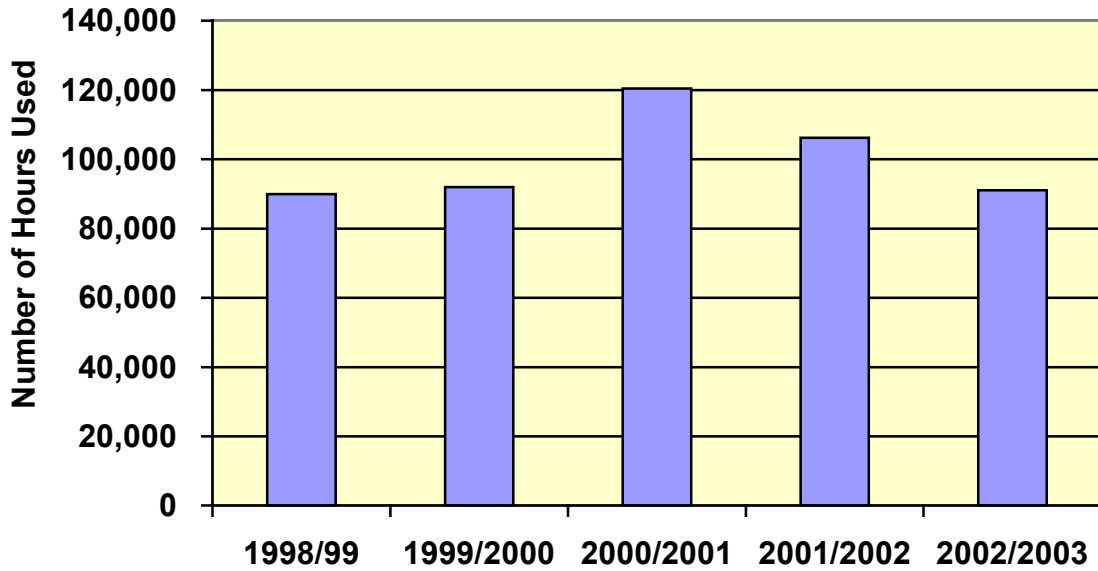


	1999/2000	2000/2001	2001/2002	2002/2003
Gymnasium Hours	80,494	70,323	62,058	55,912
Classroom and Ancillary Space Hours	11,951	16,177	23,696	18,331

GYMNASIUM USE BY AGE

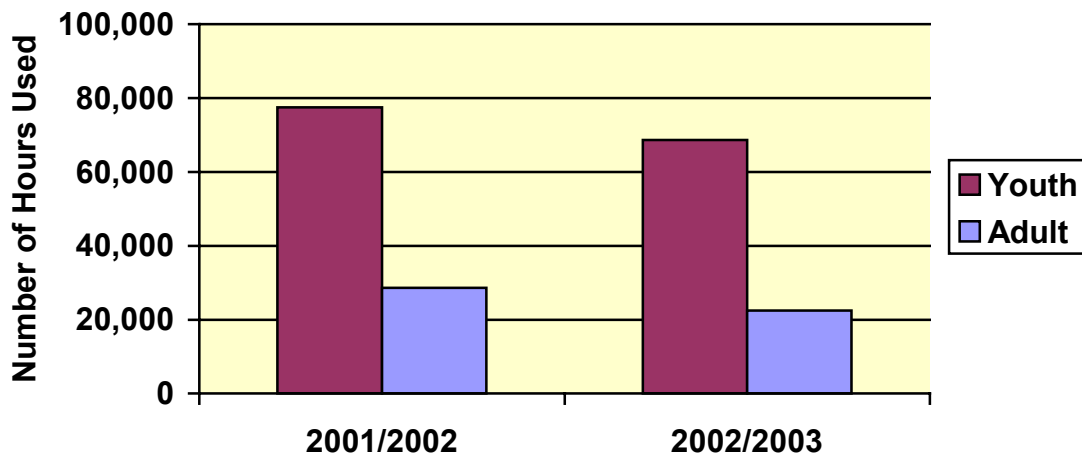


SPORTS FIELD USE ON SCHOOL/PARK SITES AFTER SCHOOL HOURS

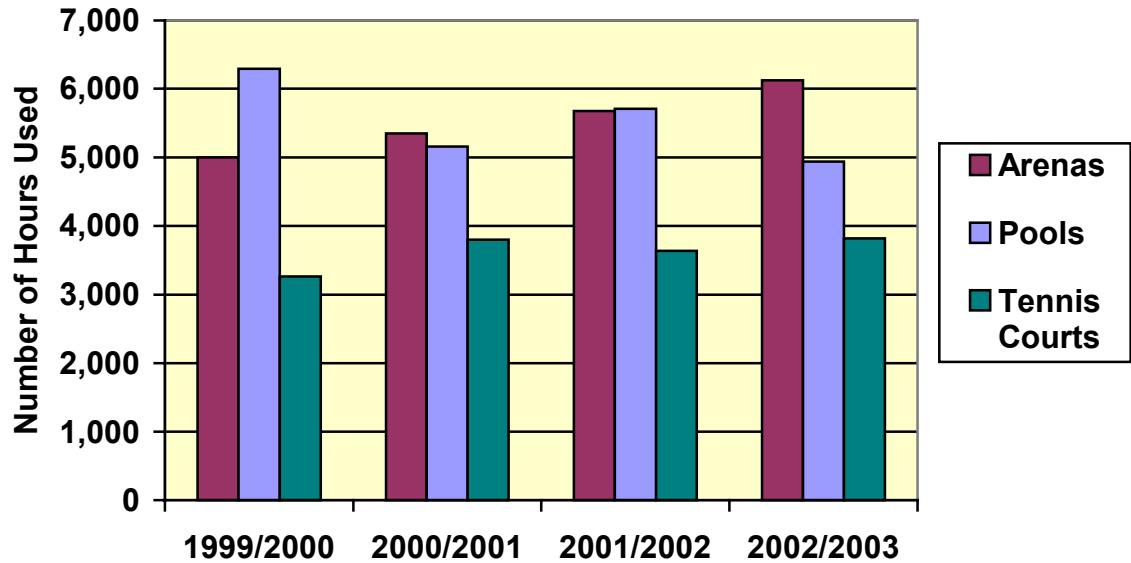


	1999/2000	2000/2001	2001/2002	2002/2003
Hours of Use	92,000	120,437	106,197	91,127

SPORTS FIELD USE BY AGE



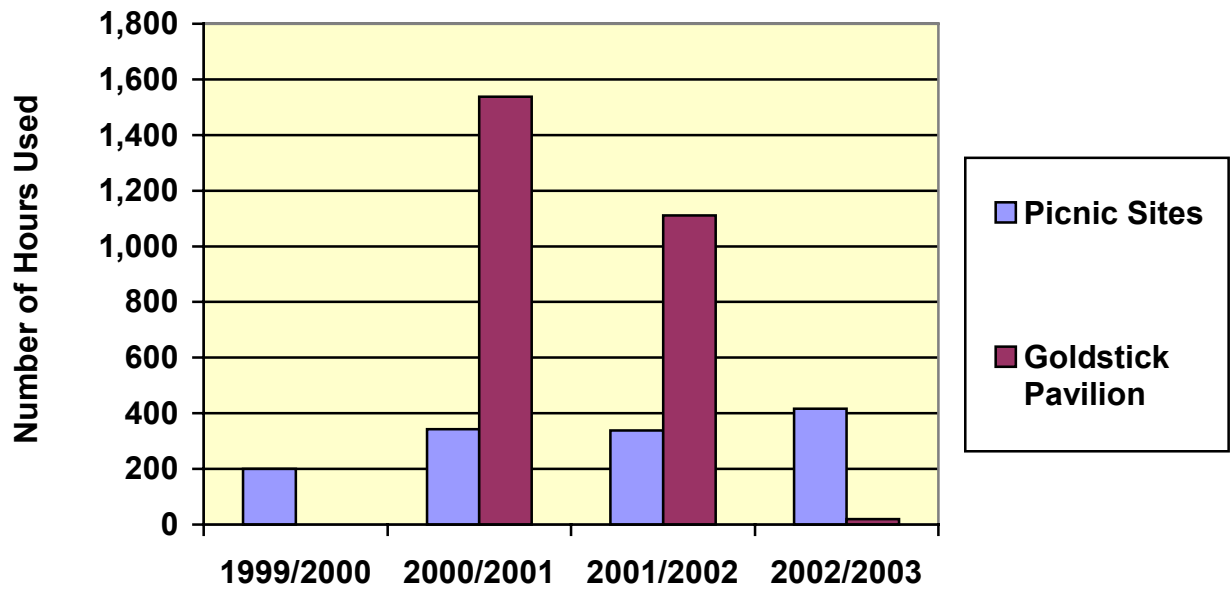
SCHOOL USE OF CITY FACILITIES (A)



	1999/2000	2000/2001	2001/2002	2002/2003
Arenas	5000	5348	5676	6121
Tennis Courts	3266	3802	3636	3821
Pools	6289	5159	5707	4937

Note: Tennis courts are booked individually. For example if a school booked Grand Trunk Courts for 2 hours, it would be recorded as 3 courts X 2 hours = 6 hours. To more accurately reflect relative usage of facilities, the hours booked have been divided by 4 to represent the number of hours a tennis court facility (2-6 courts) was booked.

SCHOOL USE OF CITY FACILITIES (B)



	1999/2000	2000/2001	2001/2002	2002/2003
Picnic Sites	200	343	338	416
Goldstick Pavilion	0	1538	1111	20

Goldstick Pavilion is primarily booked as a dressing room for winter outdoor activities such as cross-country skiing.