

Joint Use Agreement Annual Report 2001-2002



Joint Use - Cooperating for Edmonton

PRINCIPLES OF THE JOINT USE AGREEMENT

The Joint Use Agreement is guided by the following principles:

SHARED USE	That school sites and recreation sites, facilities and resources be shared.
COOPERATIVE PLANNING	That school sites and parks and recreation sites, and facilities be co-operatively planned.
CONSULTATION	That the parties to the Agreement undertake ongoing consultation with User Groups during the lifetime of the Agreement.
EFFICIENCY AND EFFECTIVENESS	That the resources of the three parties and User Groups be efficiently used and extended for the maximum benefit of the community.
SHARED COST	That costs associated with the Agreement be fairly shared among the three parties to the Agreement. User groups may have to participate in basic operating costs of facilities, and will be offered the opportunity to purchase or supply enhanced levels of service and to participate in capital improvements.
EQUAL PARTNERSHIP	That there be an equal partnership among the three parties to the Agreement.
RESERVE DEDICATION	That all reserve land and funds generated in lieu of reserve land be used solely for the purposes of school sites and parks and recreation sites.

Table of Contents

Introduction.....	1
About the Joint Use Agreement	1
About This Report	1
Steering Committee Activities and Accomplishments.....	2
Communication and Marketing	2
Meeting User Needs.....	3
Policy Issues.....	3
Land Issues	4
Administrative Matters.....	5
Coordinator.....	5
Annual Planning Exercises.....	5
School and Recreation Facilities Working Sub-Committee:	
Activities and Accomplishments	5
Committee Composition.....	5
Ongoing Activities.....	6
Standards of Play	6
Seamless Booking System	6
Sports Fields Working Sub-Committee:	
Activities and Accomplishments	6
Committee Composition.....	6
Ongoing Activities.....	7
Standards of Play	7
Monitoring and Supporting Initiatives	7
Site Planning and Facility Design Committee:	
Activities and Accomplishments	8
Committee Composition.....	8
Parking Study.....	8
Land Issue Identification.....	8
Monitoring and Supporting Initiatives	8
Finances	9
Future Priorities.....	10
Appendices.....	11
Facility Use Statistics.....	12
2001-2002 Work Plan	15
Accessibility Review Recommendations	19

Introduction

About the Joint Use Agreement

The Joint Use Agreement (JUA) is a formal agreement of the City of Edmonton, Edmonton Public Schools and Edmonton Catholic Schools. The agreement was initially signed in 1959 and most recently updated in April 1996. It is through the Joint Use Agreement that schools are available to community groups after school hours, arenas, pools and other city facilities are available to school children during the school day, and sports fields are fully utilized by school and community groups. The agreement also guides how the three partners work together to design, build and maintain school and park sites.

The work of the JUA is managed by four committees supported by a coordinator. The Steering Committee, made up of two representatives from each of the three partners, addresses global issues and provides direction and leadership to three working sub-committees. The sub-committees, each with a specific area of focus, are comprised of representatives from the partners, as well as user groups and community stakeholders. Their mandate is to study and provide recommendations to the Steering Committee on issues relevant to their respective area.

The JUA is an agreement of principles, focussed on collaboration and cooperation. The spirit of the agreement is fully supported by City Council and the two Boards of Trustees. The principles of the agreement are enclosed in Appendix 1.

About This Report

This report covers the period from September 1, 2001 to December 31, 2002. The dates reflect a change in the operating year. Subsequent reports will cover activities for the calendar year and be distributed in January.

The focus of this report has also changed from previous years. Starting with this edition, the annual report will be targeted to City Council, the Boards of Trustees of the two school districts, and senior management of the partners. The Joint Use Newsletter will be re-focussed to meet the information needs of school and community groups using facilities under the agreement.

This report provides highlights the activities and accomplishments of the JUA committees, provides statistical information on the use of facilities under the agreement, reflects on financial investment and implications, compares the situation in Edmonton to other municipalities, and identifies priorities for 2003.

Steering Committee Activities and Accomplishments

Communication and Marketing

Publications

- In October 2001 a new brochure was produced outlining the JUA. The new brochure replaced seven brochures specific to different audiences and activities of the agreement. The new brochure was very well received, generating a large amount of positive feedback.
- A one-page information sheet outlining Joint Use was prepared for distribution to trustees, councillors and the general public.
- The Joint Use News was produced and distributed to trustees, councillors, schools, and user groups in April and October 2002.

Provincial Links

- The chair of the Steering Committee sent a letter to provincial ministers and Edmonton area MLA's informing and reminding them of the role and principles of the Joint Use Agreement and highlighting activities and achievements.
- A letter was also sent to Iris Evans, Minister of Children's Services, highlighting the benefits of a collaborative approach to supporting community. Facilities provided through the Joint Use Agreement and lottery grants provided through the Government of Alberta enable not-for-profit organizations to raise the quality of life for Edmonton's children.

Presentations

- A Joint Use Orientation was provided for new principals in Edmonton Catholic Schools.
- Each service area in Edmonton Community Services received a presentation updating them on activities.
- A collection of master slides was created and circulated to Steering Committee members for review and suggestions. The master slides will be used to create specific power point presentations for various purposes.

Special Events

- In September 2002a special celebration was held at Foote Field to celebrate the kick-off to High School Football and the agreement signed between the City of Edmonton and the University of Alberta that enables school and community user groups to use this excellent venue. Representatives of City Council and the Edmonton Public and Edmonton Catholic Boards of Trustees were in attendance.
- In June 2002 the Steering Committee hosted the annual volunteer appreciation barbeque at Kinsmen Park. Members of the three JUA working

sub-committees and the U of A Shared Use of Facilities Committee enjoyed a good meal and good fellowship as they celebrated their achievements.

Meeting User Needs

Accessibility Project

The accessibility project was launched to review existing information on who is eligible for access to facilities under Joint Use, clarify conditions of use, and identify and resolve any issue areas. A proposal was approved in principle by the Steering Committee in June 2002, (Appendix 2) and representatives took the proposal back to their organizations for input and feedback over the summer. Feedback from the partners is currently being reviewed and the Steering Committee will make recommendations on implementation in the new year. When the review is completed a new Joint Use Implementation Manual will be produced including a facility inventory, guidelines for facility use, and booking information.

U of A Shared Use Committee

Foote Field at the University of Alberta's South Campus is a legacy facility of the 2001 World Championships in Athletics. The venue includes an artificial turf field, track and field facilities, and a natural turf field. During its construction, negotiations took place between representatives of the Joint Use Agreement and the University of Alberta to ensure community accesses to the facility after the games.

The principles of the JUA were used as a basis for negotiating the agreement between the City of Edmonton and the University of Alberta. The agreement was signed in September 2001 and provides for good quality and quantity of time for non-university users at competitive rates. School and community groups immediately took advantage of the opportunity to play and practice at the new venues and continue to enjoy making Foote Field a part of their season. In 2001/2002 there were 65.5 hours of community use for football (high school, minor and junior), and 126 hours of track and field bookings. In addition there were six bookings totaling 79 hours for community special events such as the Canadian Cancer Relay for Life and the Ride for Heart Event.

Policy Issues

Meadowlark Christian School

The Steering Committee heard a presentation from Meadowlark Christian School regarding a proposal to construct a new school in southwest Edmonton. The Steering Committee was unable to support the proposal. Steering Committee members indicated initial concern regarding potential over-congestion caused by three schools and up to 2,000 students using a site planned for 2 schools. It was

suggested that the Meadowlark Christian School's representatives explore existing surplus school sites in the west end.

Non-typical use of School Park Sites

Questions of who has responsibility and authority to make decisions on non-typical use of school park sites was discussed by the Steering Committee. Some school park sites are on school board land; some are on City of Edmonton property. The City of Edmonton is the booking agent for community use of these sites regardless of ownership. As some non-typical uses may not be considered appropriate by schools/school boards a definition of "non-typical use" was developed and approved, and a process was outlined for dealing with requests.

Christian Schools

A decision was made in February 2000 to include Christian Schools that were under the operation of the Edmonton Public School Board in the Joint Use Agreement. However, it became evident in 2002 that there are different circumstances related to ownership of buildings and lands, and that distinctions related to how they were to be integrated into the agreement needed to be clarified. Of particular concern was identifying which park sites were to be maintained by Community Services and what sports fields would be available for community bookings.

School Fee Waiver Requests

Community Services approached the Steering Committee with a concern about an increasing number of requests from school groups to waive fees for use of City of Edmonton facilities outside of Joint Use time. Examples included booking sports fields in the evening for a school barbecue, high school football games after 6:00 p.m. As a project to address the larger picture of eligibility and access under Joint Use was about to be launched, the City was requested to maintain the status quo until the study is completed.

Land Issues

Joint Use Review

In October 2000, the Steering Committee hired Bryce Card as a consultant to examine the new provincial regulation on disposition of school properties and its implications/impact on the Joint Use Agreement. Bryce was also given a mandate to address related land base issues and to prepare recommendations for consideration by the Steering Committee. The subsequent report was tabled with the Steering Committee in February 2002. It has proven to be an excellent resource, has provided clarity on a number of issues and reconciled the land inventory.

Land Drainage Utility

The City of Edmonton proposed a new land drainage utility as an approach to ensuring long-term funding for stormwater management. The proposal would change stormwater management from a tax-supported service to a user-fee based utility. The school boards did not support the City's approach to consultation on the matter and actively endeavored to make the process more inclusive and effective. As a result of their action, additional consultation was undertaken, and special meetings were held with stakeholders who would be most impacted – tax-exempt property owners.

Public/Private Partnership Proposal

In the year 2000, Edmonton Catholic Schools developed a public/private partnership proposal to build an integrated Catholic high school/retail grocery outlet at the Callingwood school and park site. Discussions and negotiations between Edmonton Catholic Schools, the City of Edmonton, and Alberta Infrastructure continued for nearly two years. In the end, Edmonton Catholic Schools chose not to pursue the partnership, due to concerns with rezoning and the Municipal Government Act.

Administrative Matters

Coordinator

In April 2002, the Joint Use Coordinator was established as a permanent position within the City of Edmonton. The position is funded by the three partners, with the coordinator reporting to the Steering Committee through the chair.

Annual Planning Exercises

In September 2001 the Steering Committee undertook a planning exercise to identify priorities for 2001-2002. The resulting action plan is included in Appendix 3. A planning exercise November 2002 identified priorities for 2003, which are identified later in this document. The action plan is currently being finalized.

School and Recreation Facilities Working Sub-Committee: Activities and Accomplishments

Committee Composition

The committee includes representation from:

- Adult Indoor Sports
- Minor Indoor Sports
- Girl Guides of Canada

- Scouts Canada
- Community Services, City of Edmonton
- Edmonton Catholic Schools
- Edmonton Public Schools
- Edmonton Sport Council
- Edmonton Federation of Community Leagues

Ongoing Activities

The School and Recreation Committee provides a venue for regular sharing of information among user groups and the Partners of the JUA. Discussion of procedures and processes related to school bookings and user issues are part of every agenda.

Standards of Play

Standards of Play were implemented as a tool for providing fair and equitable access to school gymnasiums for community groups. The Standard defines the amount of time and type of gym for various categories of users. User groups were consulted in preparing the standards and were given one years advance notice prior to implementation. Standards were implemented for the 2002-2003 year along with an appeal process to enable groups to challenge the suitability of the standards for their activity. Additional work will be required to sort out special needs of some user groups, and the School and Recreation Committee continues to meet and negotiate with these groups with the intent to have issues resolved for the 2003-2004 booking season.

Seamless Booking System

The 2002-2003 booking season introduced a “one-stop-shop” for school user groups. The staff who book Catholic and Public Schools worked closely together to come to agreement on guidelines and regulations and produced a unified booking package for the first time. All previous gymnasium users received the same information package and submitted their booking requests to the same address. The booking staffs worked together to sort and allocate requests resulting in better service to the customer. The system will continue with efforts to better integrate the booking of Christian Schools within the Edmonton Public System and Francophone Schools.

Sports Fields Working Sub-Committee: Activities and Accomplishments

Committee Composition

The committee includes representation from:

- Cricket

- Minor Baseball
- Minor Tackle Football
- Edmonton Minor Soccer Association
- Edmonton Inter-District Youth Soccer Association
- Edmonton District Soccer Association
- Slo-Pitch
- Youth Softball
- Edmonton Track and Field Council
- Edmonton Rugby Union
- Ultimate Frisbee
- Edmonton Catholic Schools
- Community Services, City of Edmonton
- Edmonton Public Schools
- Edmonton Sport Council
- Edmonton Federation of Community Leagues
- U of A South Campus (Foote Field)

Ongoing Activities

The Sports Fields Committee provides a venue for regular sharing of information between user groups and the City of Edmonton. Discussion of procedures and processes related to field bookings, maintenance and operations are part of every agenda.

Standards of Play

The Sports Fields Committee has struggled with trying to re-establish Standards of Play, partly due to competing interests within the sport field user groups. A new proposal was put forward by Community Services Bookings and Information in the fall of 2002 which was gratefully supported by the Sports Fields Committee. The Bookings Section has done an analysis sports field bookings and found significant variances in the standards currently applied within specific sports. Meetings with experts in these sports will commence in January to negotiate standards. It is hoped to have the proposed standards established and communicated to all users prior to the 2003 booking season. The standards would then be implemented in 2004 giving a year's notice and opportunity to appeal as done with implementing standards for gymnasiums.

Monitoring and Supporting Initiatives

The Committee followed the progress of and provided input into a number of initiatives

- Foote Field Shared Use Agreement
- Economic Impact of Sport report
- Potential development of artificial turf at Clarke Park
- Home Base Program
- Multi-Sport Tournament Site report

- City of Edmonton Sport Field Strategy

Site Planning and Facility Design Committee: Activities and Accomplishments

Committee Composition

The committee includes representation from:

- Edmonton Public Schools
- Edmonton Catholic Schools
- Community Services, City of Edmonton
- Planning and Development, City of Edmonton
- Urban Development Institute
- Edmonton Sport Council
- Edmonton Federation of Community Leagues

Parking Study

A parking study was initiated to address concerns raised regarding parking on joint use school and park sites. The report was completed in 2002 and provides planning principles and guidelines for development of future sites and an action plan to address problems on existing sites. The report has been accepted by the Steering Committee and will be distributed to the partners.

Land Issue Identification

The parking study was the last of a number of projects undertaken by the Site Planning and Facility Design Committee. In 2002 the committee undertook to identify land issues affecting the JUA on behalf of the Steering Committee. The issues identified fell into two categories: design and standards, and the planning process. It was noted that many of the issues raised are being directly addressed by a number of initiatives currently underway. It was therefore proposed that the committee act as a vehicle to strategize. Reports from other projects/studies would be brought to the table for review, discussion and, where appropriate, the committee would seek to develop consensus positions and prepare input to the studies or initiatives on behalf of the Steering Committee.

Monitoring and Supporting Initiatives

The Committee has identified the following initiatives to monitor

- Future School Sites Study
- Urban Parks Management Plan
- Ministers Symposium on Schools
- Smart Choices for Developing Our Community

Finances

The Joint Use Agreement operates on a budget of \$77,000. This includes the costs of a coordinator, hosting of committee meetings, printing, and volunteer appreciation. The costs are shared equally by the three partners.

For this minor investment, the parties are able to provide citizens of Edmonton with far greater access to facilities, at significantly less cost than other municipalities.

The following chart shows a comparison of costs for use of school facilities in Hamilton, Calgary and Edmonton.

COMPARISON: SCHOOL GYM COMMUNITY RENTAL RATES

		Edmonton		Calgary		Hamilton	
		Youth	Adult	Youth	Adult	Youth	Adult
Large High School	Mon-Fri	\$7.50	\$15	\$17	\$29	\$9-\$40	\$26-40
Large High School	Sat/Sun	\$7.50	\$15	\$84	\$84	\$9-\$43	\$26-43
Small/Medium	Mon-Fri	No charge	\$10	\$15	\$23	\$5-\$15	\$13-\$20
Small/Medium	Sat/Sun	No charge	\$10	\$84	\$84	\$5-\$18	\$13-\$20

Notes: Information is for comparison purposes only and does not reflect any jurisdiction's fee schedule precisely as the municipalities classify gymnasiums and user groups differently. Rates are rounded to nearest dollar.

FEES FOR SCHOOLS USING CITY FACILITIES DURING SCHOOL HOURS

	Edmonton	Calgary	Hamilton
Ice Arena	No charge	\$43/hour	\$86/hour
Swimming Pool	No charge	\$33-\$66/ hour	\$55/hour
Sports Field	No charge	\$1-\$61/hour	\$2-\$7/hour

Access to City of Edmonton facilities is free. School users are charged for extra services such as additional floods on ice surfaces, swimming instruction, and lighting on sports fields.

Hamilton pool rental includes the cost of 2 lifeguards.

Future Priorities

In November 2002, the Steering Committee held a strategic planning retreat and identified the following priorities for 2003:

- Clarify Steering Committee Role.
- Identify criteria for being part of the agreement.
- Address issues regarding sport alternative programs.
- Review accessibility/eligibility criteria.
- Assess demands and trends.
- Relationship with the Province.
- Prepare for a new agreement.

An action plan to realize the goals is currently under development. It will identify actions for the Steering Committee and provide some direction to the sub-committees.

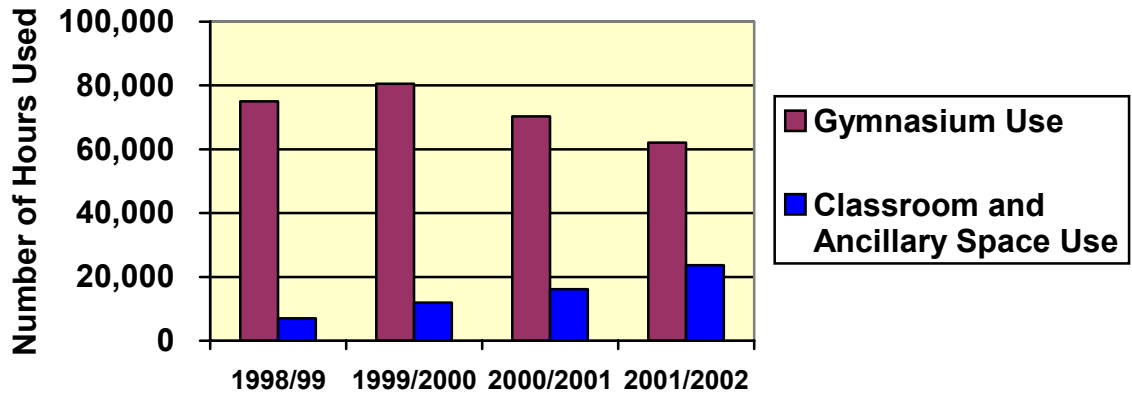
Appendices

Appendix 1: Facility Use Statistics

Appendix 2: 2001-2002 Work Plan

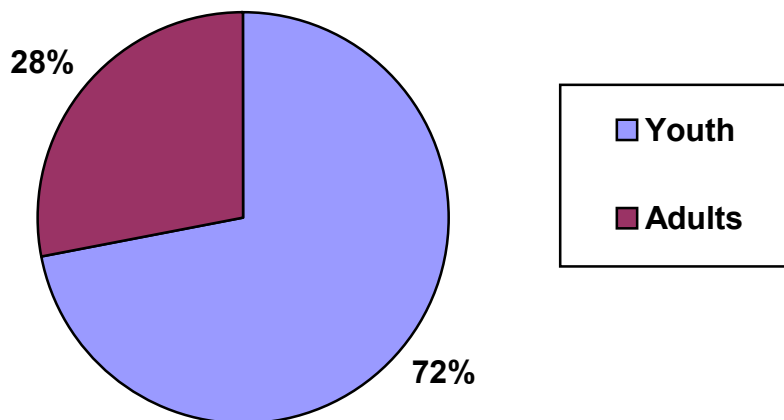
Appendix 3: Accessibility Review Recommendations

COMMUNITY USE OF SCHOOL FACILITIES

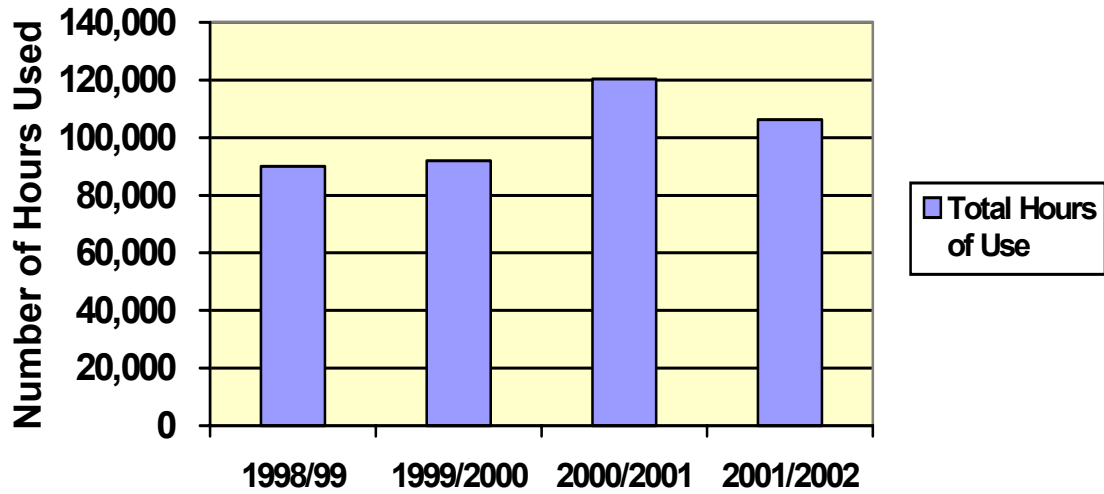


	1998/1999	1999/2000	2000/2001	2001/2002
Gymnasium Hours	75,035	80,494	70,323	62,058
Classroom and Ancillary Space Hours	6,992	11,951	16,177	23,696

GYMNASIUM USE BY AGE 2001/2002

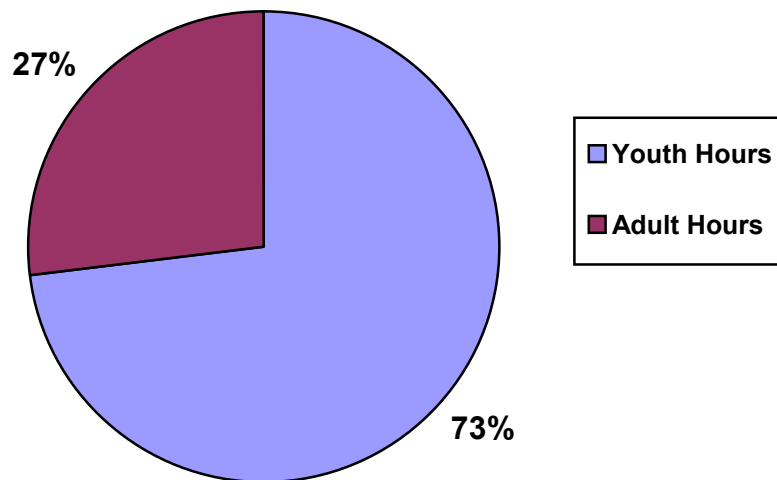


SPORTS FIELD USE ON SCHOOL/PARK SITES AFTER SCHOOL HOURS

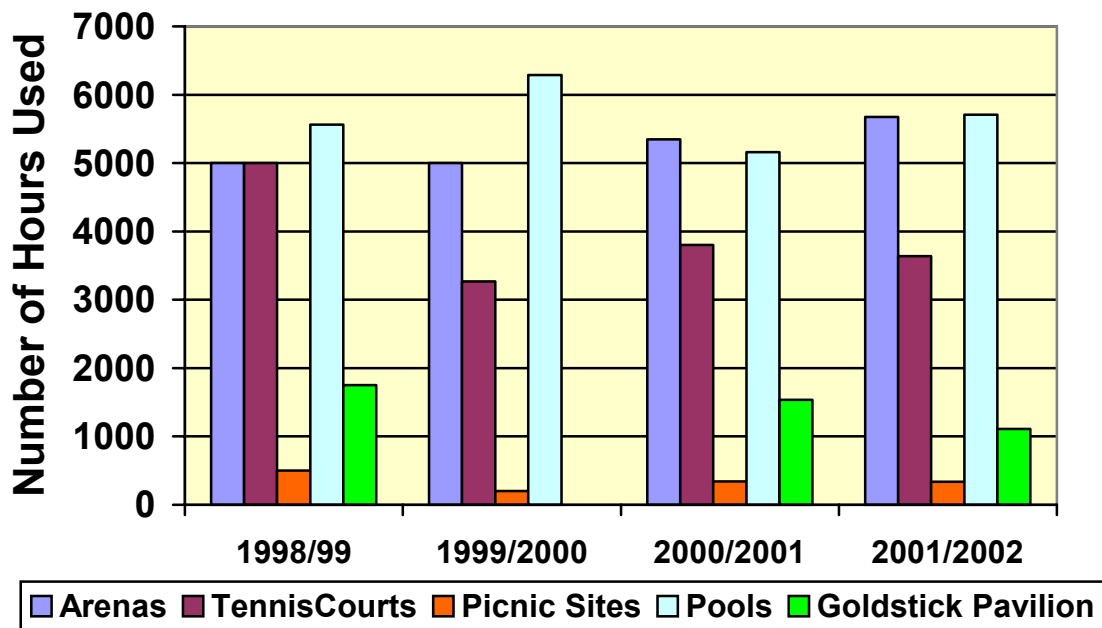


	1998/99	1999/2000	2000/2001	2001/2002
Hours of Use	90,000	92,000	120,437	106,197

SPORTS FIELD USE BY AGE 2001/2002



SCHOOL USE OF CITY FACILITIES



	1998/1999	1999/2000	2000/2001	2001/2002
Arenas	5000	5000	5348	5676
Tennis Courts	5000	3266	3802	3636
Picnic Sites	500	200	343	338
Pools	5564	6289	5159	5707
Goldstick Pavilion	1750	0	1538	1111

Note: Tennis courts are booked individually. For example if a school booked Grand Trunk Courts for 2 hours, it would be recorded as 3 courts X 2 hours = 6 hours. To more accurately reflect relative usage of facilities, the hours booked have been divided by 4 to represent the number of hours a tennis court facility (2-6 courts) was booked.

JOINT USE STEERING COMMITTEE
OUTCOMES OF PLANNING DAY

FOCUS AREA: STRONG PARTNERSHIP

Goal: There will be a raised level of awareness of the Joint Use Agreement among elected officials, within the administration of the partners, with facility users, and in the general public. The Joint Use Agreement will be recognized as a strong partnership and serve as a model for other jurisdictions.

Actions:

Develop a one-page JUA question & answer information sheet for elected representatives.	Coordinator	November 2001
Sponsor a football night at Foote Field	Don, Doug, Ann	Action plan by spring 2002 for implementation in fall.
Provide orientation to Joint Use in “new principal” inservice.	Coordinator	November 2001 ECS
Provide an annual update to pool managers, CRC’s and arena staff.	Coordinator	Fall/winter. Dates as negotiated with staff.
Conduct annual inservice for all principals.	Garnet, Brian	ECS – December 2001 EPS -
Create Power Point Presentation including: Key indicators /stats on facility use, what parties bring to the table, what you give and get back, how to book facilities.	Coordinator	Draft for Steering Committee review in winter 2002.
Distribute the Joint Use brochure to all trustees and city councillors.	Coordinator	November 2001
Produce and distribute two Joint Use newsletters annually.	Coordinator	Annual report release in September; update newsletter in Feb/March

FOCUS AREA: ACCESSIBILITY

Goal: There will be a long term commitment to ensuring that facilities are accessible. Schools will make better use of civic facilities, and the community will make better use of school facilities.

Actions:

Complete inventory of facilities.	Administrative task group linked to Steering Committee through Doug and Don.	Action plan by December 31, 2001
Review and update regulations related to levels of service.		
Negotiate agreement on base levels that the parties can commit to provide.		
Implement Standards of Play for gymnasiums.	School and Rec Committee	Standards applied in 2001/2002. To be fully implemented for 2002/2003
Review Standards of Play for sports fields.	Sports Fields Committee	Don and Ann to prepare timeline/action plan by January 2002
Continue work toward a seamless booking system.	Bookings Units	Task group recommendations to School & Recreation Committee by December 2001. School and Rec Committee to develop timelines for implementing a unified package in spring 2002.
Review the Total Quality Sports Fields document.	Sports Fields Committee	Complete by spring of 2002

FOCUS AREA: INNOVATION/ADAPTATION

Goal: Existing partnerships are nurtured and monitored, and linkages and new partnerships are developed as circumstances and needs change.

Actions:

Whenever one partner develops facilities, the other partners will be brought into the process. (e.g. Legacy Development at Clarke Stadium, new schools)	Steering Committee	School Boards to provide capital plans in the spring. Community Services to share civic capital budget December/January.
Link users to other resources when Joint Use cannot meet their needs.	Steering Committee, Sub-committees, coordinator	Focus on gymnasias. Action plan by.....
Approach other public/semi-public facility owners/operators to discuss possible agreements, linkages, etc. (e.g. Grant McEwan College, NAIT, U of A)	Steering Committee	Present an overview on Joint Use to Grant MacEwan College and NAIT once power point is ready.
Monitor and improve existing partnerships including Foote Field and Francophone Schools.	Administration	Foote Field – Sports Fields Committee to review annually and report to the Steering Committee in February. Francophone – George to meet annual with Francophone Board to review.
Monitor and support initiatives that contribute to the principles of the Joint Use Agreement. (e.g. Multi-sport Tournament Site)	Appropriate committees	Coordinator and sub-committees to prepare a list of initiatives for review by Steering Committee.

FOCUS AREA: LAND ISSUES

Goal: There will be internal agreement on land issues. The partners will present a united front in discussion with parties external to the partnership.

Actions:

<p>Conduct a review of what's working and what's not related to land issues for the three partners. Includes identification of relevant policies, positions, standards, etc.</p>	<p>Administrative review linked to Steering Committee through Garnet</p>	<p>Garnet will approach Bryce to facilitate. Target date to identify issues: February 28, 2002</p>
<p>Monitor related studies and projects (e.g. Future School Sites Study)</p>	<p>Site Planning and Facility Design Committee</p>	<p>Coordinator and sub-committee to prepare a list of initiatives for review by Steering Committee. Willard Hughes to be invited to a spring 2002 meeting to provide an update on the Future School Sites Study.</p>
<p>Review and streamline the billing process for planning services provided to School Boards by Community Services.</p>	<p>Administrative review</p>	<p>Implement in spring 2002. Consider a flat fee based on historic data.</p>

**ACCESSIBILITY REVIEW:
RECOMMENDATIONS TO STEERING COMMITTEE
Approved in principle June 2002**

Recommendation 1:

That a separate category of user be identified for “sports alternative programs” such as hockey schools operating in conjunction with local school authorities. These programs would still be considered as eligible for free access to City facilities under Joint Use, but would be charged for all services.

Discussion:

The hockey schools create a much more intense use of facilities than curriculum activities previously accommodated under Joint Use resulting in severely compromised ice surfaces. Community Services staff have identified a need for more frequent flooding of the ice to ensure safety of other users. This creates an expense and staff scheduling issue not anticipated at the time the program was implemented. Similar consequences can be anticipated for other sport alternative programs.

Recommendation 2:

That school districts review the demand for curriculum activities, inter-school events, and sport alternative programs and advise the City of priorities for bookings on an annual basis.

Discussion:

The volume of time booked by hockey schools is interfering with traditional school use. Some physical education classes have not been able to access joint use time at their local arena due to heavy bookings by hockey schools. The same kind of potential exists for other sport alternative programs. It is not the City’s role to consider priorities for school board sponsored activities.

Recommendation 3:

That schools continue to be granted free access to Class B sports fields after 6:00 p.m. high school football, and continue to be charged for services associated with use. (e.g. lights, snow removal)

Discussion:

This recommendation is based primarily on historical precedent and the spirit of the agreement. Continuing to provide this access is in line with the Boards providing free access to schools in the summer for Community Services recreation programs. Growth in the number of schools and teams has not been matched by growth in the number of fields available for play. It is not possible for the football schedule to be accommodated within joint use time.

Recommendation 4:

That “Standards of Availability” be developed for access to schools.

Discussion:

There is a lot of inconsistency from school to school in hours made available for community use. Standards could define expectations of the amount of time different categories of schools “should” make available. These would serve as guidelines for the schools and could help spread out usage in a more equitable manner.

Standards could also define expected start times. For example, if all schools were available at 6:00 p.m. then 2, 2-hour bookings could be accommodated each evening. If a school is not available until 7:00, then only one group can be accommodated.

Recommendation 5:

That the time period from 4:00 p.m. to 6:00 p.m. be designated as “discretionary” Joint Use time in elementary schools.

Discussion:

Elementary Schools do not often have school sponsored activities happening in the gymnasium after school hours. Making this time available under Joint Use, at the principal’s discretion, would increase the number of hours available for community bookings. Although the demand is not likely to be large, agencies in the Open Doors partnership have expressed interest in accessing schools in this time slot to provide after-school activities for latch-key children.

Recommendation 6:

That negotiation be undertaken with Francophone and Christian schools to bring them fully in line with procedures and practices for booking of Public and Catholic schools.

Discussion:

While Christian school programs are fully amalgamated with EPS, their facilities are not. In some cases the facilities belong to separate organizations that are in control of facility use. Christian school facilities are being used by the community but bookings are done by the school and may not be in line with current practice. The case with Francophone Schools is similar. While Community Services is doing the bookings, the staff does not always have information on what is available and the schools are providing access directly.

Recommendation 7:

That guidelines for school use of City facilities, and guidelines for City and community use of school facilities, be reviewed on an annual basis.