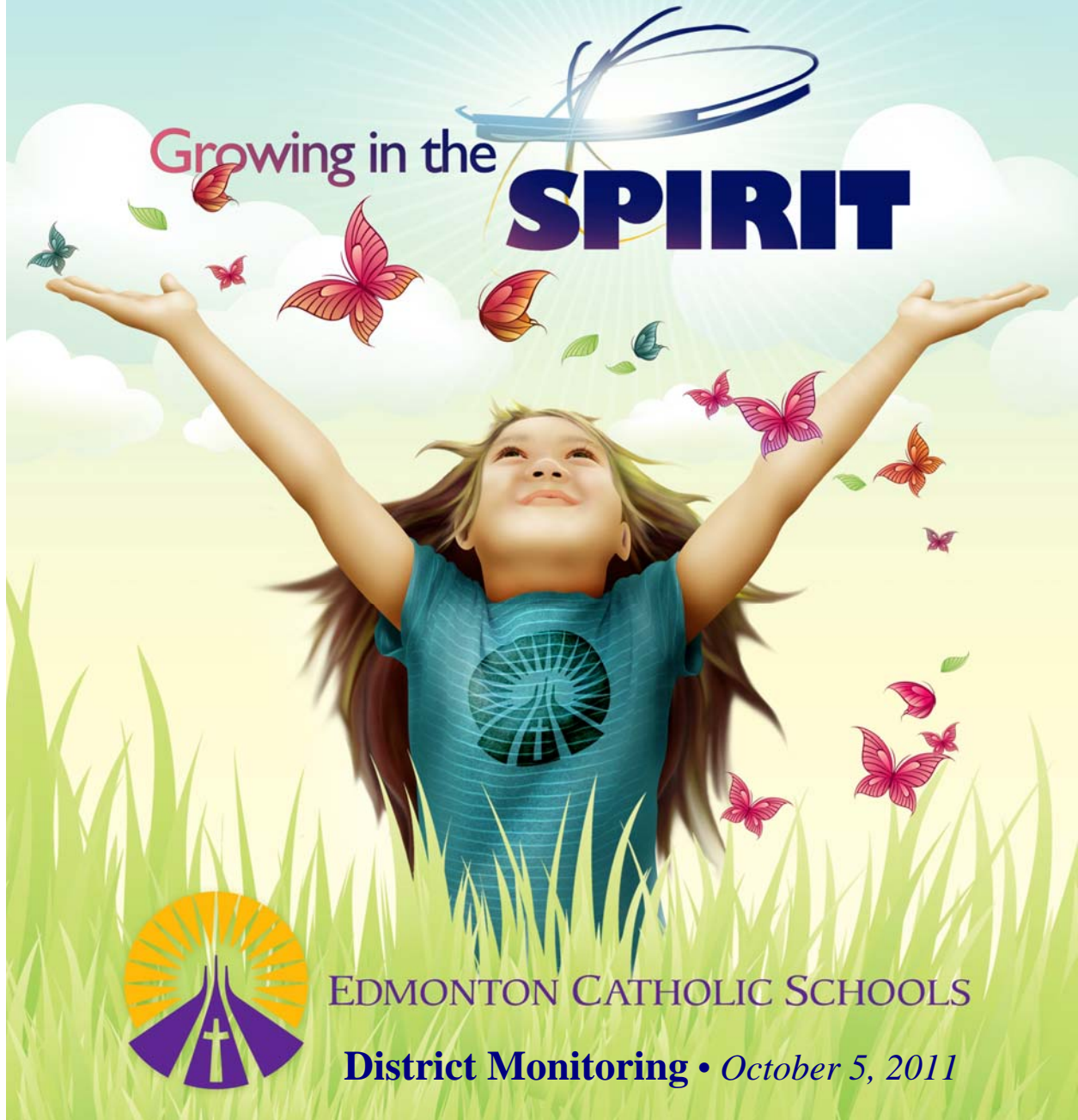


Diploma Examination Results District Report 2010/2011 School Year

Growing in the

SPIRIT



EDMONTON CATHOLIC SCHOOLS

District Monitoring • *October 5, 2011*

EDMONTON CATHOLIC SCHOOLS DIPLOMA EXAMINATION PROGRAM 2010/2011 SCHOOL YEAR

1. OUR PHILOSOPHY OF STUDENT ACHIEVEMENT

Catholic education embraces the belief that all students can learn and develop their gifts. Edmonton Catholic Schools approaches all measures of student success from within this philosophical framework. A high value is placed on diploma examinations within the context of a vast array of qualitative, quantitative, and informal measures of student success. These are in place to ensure that students are given the highest quality Catholic education and, in turn, the best opportunities to embrace their God-given gifts, talents, and potential in school and beyond.

2. BACKGROUND

The Diploma Examination Program was established by Alberta Education in 1984 to assist in the development and maintenance of excellence in educational standards. The purposes of this program are to certify the level of individual student achievement in selected grade 12 courses, to ensure that the provincial standards of achievement are maintained, and to report individual and group results. Edmonton Catholic Schools' goal is to exceed provincial standards.

To receive a high school diploma, students are required to write at least two diploma examinations, either English Language Arts 30-1 or 30-2 and either Social Studies 30-1 or 30-2. In addition to one English course, students in Francophone programs present one of the Français exams to meet their language arts requirement. Francophone or French Immersion students must use the French translation of a diploma exam and respond in French in order to have their transcripts show that the language of examination was French.

The following courses had diploma examinations and most of them had a French translation (*) available upon request:

- English Language Arts 30-1
- English Language Arts 30-2
- Social Studies 30-1*
- Social Studies 30-2*
- Français 30-1
- French Language Arts 30-1
- Applied Mathematics 30*
- Pure Mathematics 30*
- Biology 30*
- Chemistry 30*
- Physics 30*
- Science 30

In order to obtain credit for a diploma examination course, students must write the appropriate diploma examination and obtain a final course mark of 50% or higher. A student's final course mark is usually determined by averaging the mark obtained on the diploma examination with the school-awarded mark. There are some exceptions to this, for example, for students with mature status. The final course mark is sometimes referred to as the final blended mark.

When reviewing examination results, differences between school-awarded marks and the diploma examination marks are expected. These two measures of achievement are complementary. The diploma examination provides a common measure of achievement for all students across the province. The school-awarded mark reflects *all* aspects of course learning, much of which is not measurable through pencil and paper tests.

Results are not released to the public when fewer than six students wrote the examination. In 2010/2011, no students from our District wrote the Français 30-1 exam.

3. SUMMARY OF THE DIPLOMA EXAMINATION PROGRAM RESULTS

A. AVERAGES FOR SCHOOL-AWARDED, DIPLOMA, AND FINAL COURSE MARKS

Student averages from Edmonton Catholic Schools were compared to the provincial averages for the school-awarded marks, diploma examination marks, and final course marks (Table 1 in Appendix A).

- SCHOOL-AWARDED MARKS**
- Edmonton Catholic students **exceeded** the provincial average school-awarded marks in **six** subjects:
 - English Language Arts 30-1
 - English Language Arts 30-2
 - French Language Arts 30-1
 - Social Studies 30-1
 - Social Studies 30-2
 - Science 30
- DIPLOMA MARKS**
- Edmonton Catholic students **exceeded** the provincial average diploma marks in **five** subjects:
 - English Language Arts 30-1
 - English Language Arts 30-2
 - Social Studies 30-1
 - Social Studies 30-2
 - Physics 30
- FINAL COURSE MARKS**
- Edmonton Catholic students **met or exceeded** the provincial average final course marks in **five** subjects:
 - English Language Arts 30-1
 - English Language Arts 30-2
 - Social Studies 30-1
 - Social Studies 30-2
 - Science 30
 - Edmonton Catholic Schools exceeded the provincial final course averages the most in English Language Arts 30-2 where the difference was 2.3%.

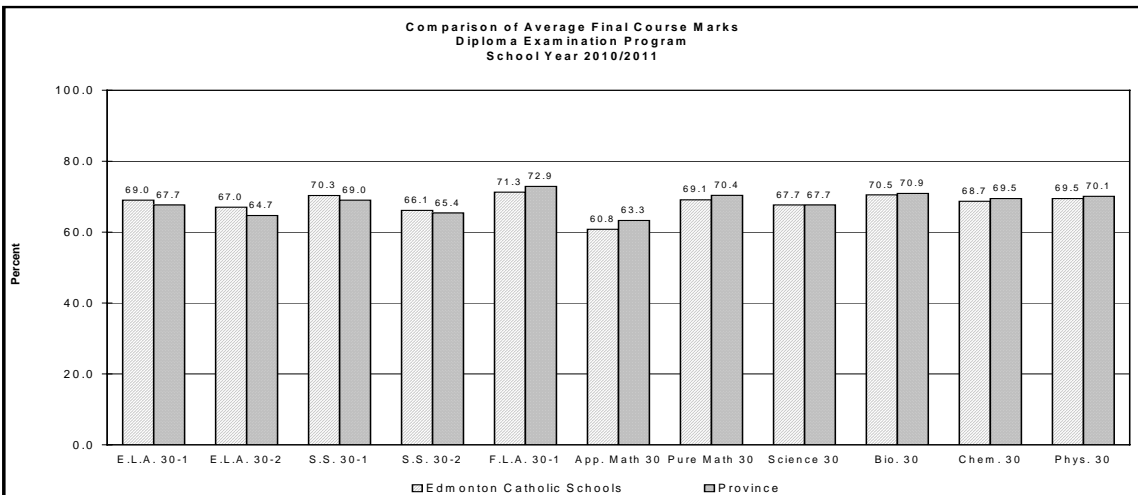
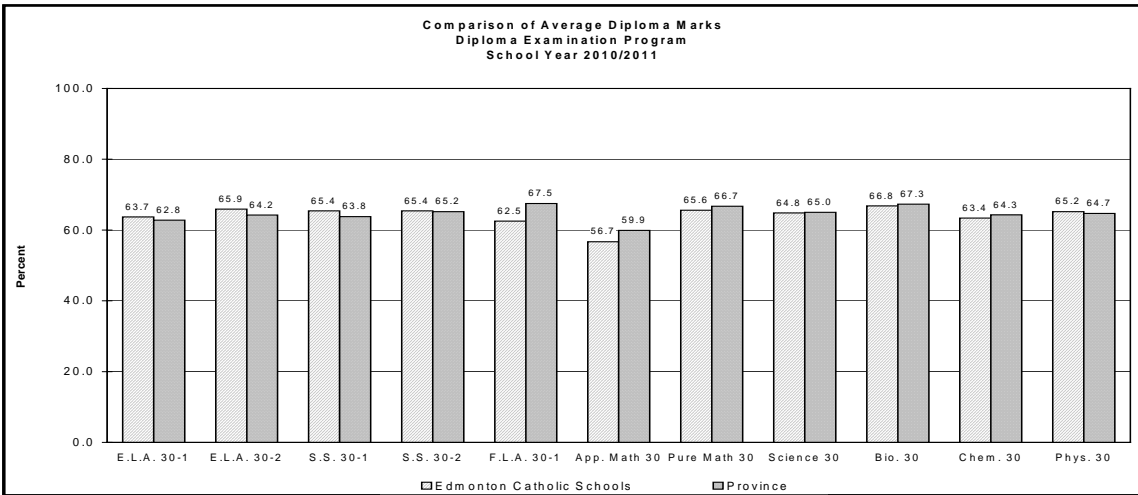
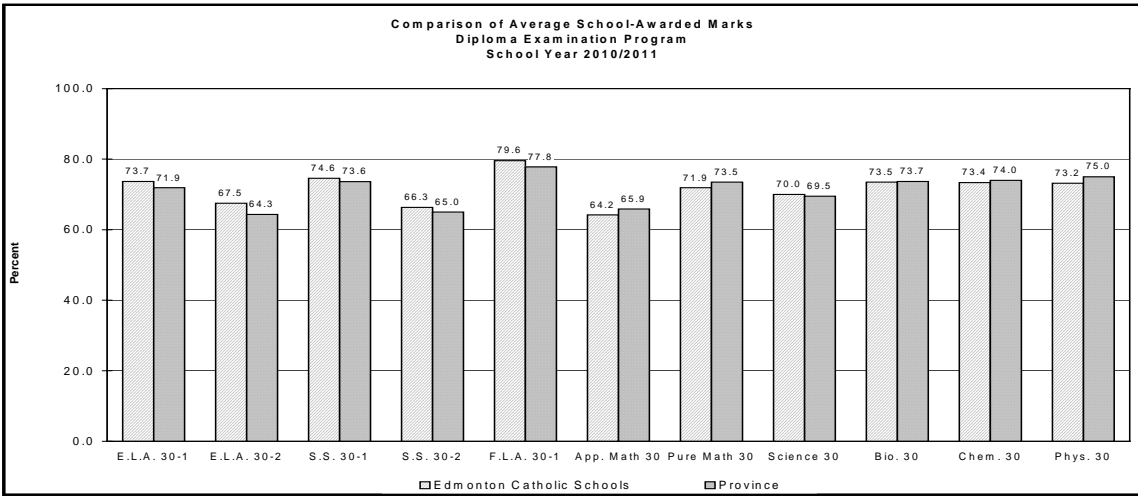
B. ACCEPTABLE STANDARD AND STANDARD OF EXCELLENCE

The percentage of students in Edmonton Catholic Schools achieving the Acceptable Standard and the Standard of Excellence in the Diploma Examination subjects were compared with provincial averages (Table 2 in Appendix A).

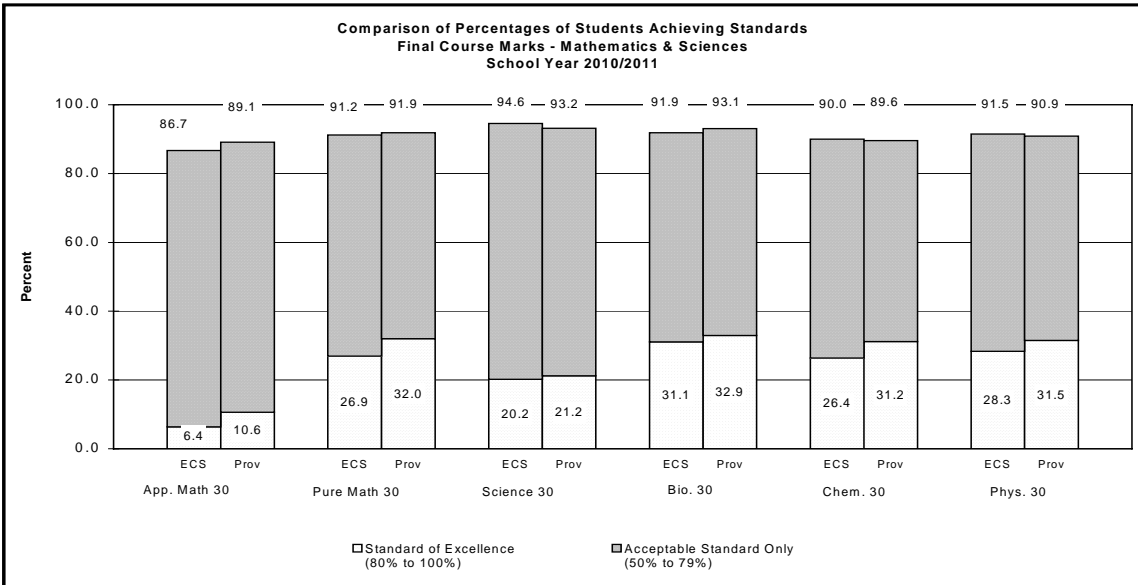
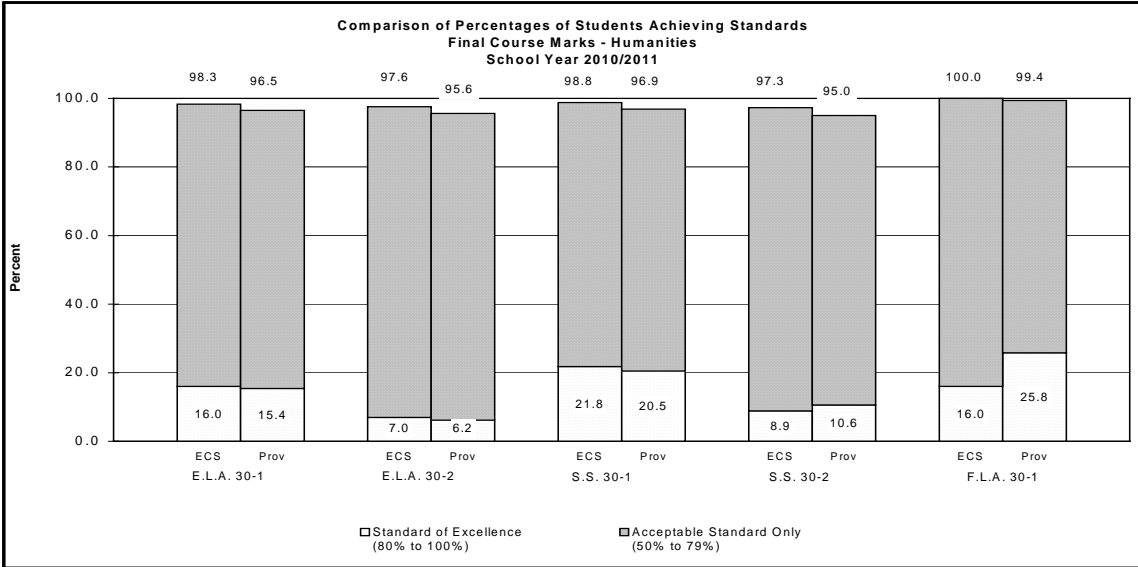
- ACCEPTABLE STANDARD**
- *Acceptable Standard* is the achievement of a **mark of 50% or greater**.
 - The percentage of Edmonton Catholic students achieving the *Acceptable Standard* **exceeded** the provincial percentage in the
 - **School-Awarded** Results in:
 - English Language Arts 30-1
 - English Language Arts 30-2
 - French Language Arts 30-1
 - Social Studies 30-1
 - Social Studies 30-2
 - Biology 30
 - Chemistry 30
 - Physics 30
 - Science 30
 - **Diploma Examination** Results in:
 - English Language Arts 30-1
 - English Language Arts 30-2
 - Social Studies 30-1
 - Social Studies 30-2
 - Chemistry 30
 - Physics 30
 - Science 30
 - **Final Course** Results in:
 - English Language Arts 30-1
 - English Language Arts 30-2
 - French Language Arts 30-1
 - Social Studies 30-1
 - Social Studies 30-2
 - Chemistry 30
 - Physics 30
 - Science 30
 - In considering the *Acceptable Standard* for the final course results, Edmonton Catholic Schools exceeded the province the most in Social Studies 30-2 (2.3%).

- STANDARD OF EXCELLENCE**
- *Standard of Excellence* is the achievement of a **mark of 80% or greater**.
 - The percentage of Edmonton Catholic students achieving the *Standard of Excellence* **exceeded** the provincial percentage in the
 - **School-Awarded** Results in:
 - English Language Arts 30-1
 - English Language Arts 30-2
 - French Language Arts 30-1
 - Social Studies 30-1
 - **Diploma Examination** Results in:
 - English Language Arts 30-2
 - Social Studies 30-1
 - Physics 30
 - Science 30
 - **Final Course** Results in:
 - English Language Arts 30-1
 - English Language Arts 30-2
 - Social Studies 30-1
 - In considering the *Standard of Excellence* for the final course results, Edmonton Catholic Schools exceeded the province the most in Social Studies 30-1 (1.3%).

School-Awarded, Diploma, and Final Course Marks – 2010/2011



Acceptable Standard and Standard of Excellence Final Course Results – 2010/2011



4. FIVE YEAR SUMMARY OF THE DIPLOMA EXAMINATION RESULTS

The percentages of students in Edmonton Catholic Schools achieving the acceptable standard and the standard of excellence in each subject area were compared with the province over the past five years (Tables 3, 4, and 5 in Appendix A). In considering these trends, please note that this is the second year for results for Social Studies 30-1 and Social Studies 30-2 and only the third year for results for Chemistry 30 and Physics 30.

SCHOOL-AWARDED RESULTS

- For at least each of the past **five** years **Edmonton Catholic Schools** has **exceeded** the province in respect to:
 - English Language Arts 30-1 – Acceptable Standard
 - English Language Arts 30-1 – Standard of Excellence
 - English Language Arts 30-2 – Acceptable Standard
- For each of the past **four** years **Edmonton Catholic Schools** has **exceeded** the province in respect to:
 - English Language Arts 30-2 – Standard of Excellence
 - Biology 30 – Acceptable Standard
- For each of the past **three** years **Edmonton Catholic Schools** has **exceeded** the province in respect to:
 - Chemistry 30 – Acceptable Standard
- For each of the past **two** years **Edmonton Catholic Schools** has **exceeded** the province in respect to:
 - French Language Arts 30-1 – Acceptable Standard
 - Social Studies 30-1 – Acceptable Standard
 - Social Studies 30-1 – Standard of Excellence
 - Social Studies 30-2 – Acceptable Standard
 - Science 30 – Acceptable Standard
- This year **Edmonton Catholic Schools** also **exceeded** the province in respect to:
 - French Language Arts 30-1 – Standard of Excellence
 - Physics 30 – Acceptable Standard

DIPLOMA EXAMINATION RESULTS

- For at least each of the past **five** years **Edmonton Catholic Schools** has **exceeded** the province in respect to:
 - English Language Arts 30-1 – Acceptable Standard
- For each of the past **three** years **Edmonton Catholic Schools** has **exceeded** the province in respect to:
 - English Language Arts 30-2 – Acceptable Standard
- For each of the past **two** years **Edmonton Catholic Schools** has **exceeded** the province in respect to:
 - English Language Arts 30-2 – Standard of Excellence
 - Social Studies 30-1 – Acceptable Standard
 - Social Studies 30-1 – Standard of Excellence
 - Social Studies 30-2 – Acceptable Standard
- This year **Edmonton Catholic Schools** also **exceeded** the province in respect to:
 - Chemistry 30 – Acceptable Standard
 - Physics 30 – Acceptable Standard
 - Physics 30 – Standard of Excellence
 - Science 30 – Acceptable Standard
 - Science 30 – Standard of Excellence

FINAL COURSE RESULTS

- For at least each of the past **five** years **Edmonton Catholic Schools** has **exceeded** the province in respect to:
 - English Language Arts 30-1 – Acceptable Standard
 - English Language Arts 30-1 – Standard of Excellence
 - English Language Arts 30-2 – Acceptable Standard
- For each of the past **two** years **Edmonton Catholic Schools** has **exceeded** the province in respect to:
 - English Language Arts 30-2 – Standard of Excellence
 - French Language Arts 30-1 – Acceptable Standard
 - Social Studies 30-1 – Acceptable Standard
 - Social Studies 30-1 – Standard of Excellence
 - Social Studies 30-2 – Acceptable Standard
 - Physics 30 – Acceptable Standard
- This year **Edmonton Catholic Schools** also **exceeded** the province in respect to:
 - Chemistry 30 – Acceptable Standard
 - Science 30 – Acceptable Standard

Overall, Edmonton Catholic Schools' students have continued to exceed the province in a number of courses over time.

APPENDIX A

DIPLOMA EXAMINATION PROGRAM RESULTS 2010/2011

- **Table 1 – Numbers of Students and Average Marks in Diploma Examination Subjects**
- **Table 2 – Percentages of Students Achieving the Acceptable Standard and the Standard of Excellence in Diploma Examination Subjects**
- **Table 3 – School-Awarded Marks – Acceptable Standard and Standard of Excellence – Five Years of Multiyear Results**
- **Table 4 – Diploma Examination Marks – Acceptable Standard and Standard of Excellence – Five Years of Multiyear Results**
- **Table 5 – Final Course Marks – Acceptable Standard and Standard of Excellence – Five Years of Multiyear Results**
- **Table 6 – Participation Rates – Percentage of Third Year Students Completing the Course – Five Years of Multiyear Results**

EDMONTON CATHOLIC SCHOOLS

Table 1
Numbers of Students and Average Marks in Diploma Examination Subjects
2010/2011 School Year

Subject	Number of Students		School-Awarded Mark		Diploma Examination Mark		Final Course Mark	
	ECS	Province	ECS	Province	ECS	Province	ECS	Province
English Language Arts 30-1	1490	29070	73.7	71.9	63.7	62.8	69.0	67.7
English Language Arts 30-2	902	14557	67.5	64.3	65.9	64.2	67.0	64.7
Social Studies 30-1	1314	23608	74.6	73.6	65.4	63.8	70.3	69.0
Social Studies 30-2	874	16546	66.3	65.0	65.4	65.2	66.1	65.4
Applied Mathematics 30	533	10811	64.2	65.9	56.7	59.9	60.8	63.3
Pure Mathematics 30	1325	23034	71.9	73.5	65.6	66.7	69.1	70.4
Science 30	426	5008	70.0	69.5	64.8	65.0	67.7	67.7
Biology 30	1191	22822	73.5	73.7	66.8	67.3	70.5	70.9
Chemistry 30	1007	18793	73.4	74.0	63.4	64.3	68.7	69.5
Physics 30	565	10660	73.2	75.0	65.2	64.7	69.5	70.1
French Language Arts 30-1	75	1269	79.6	77.8	62.5	67.5	71.3	72.9

Table 2
Percentages of Students Achieving the Acceptable Standard
and the Standard of Excellence in Diploma Examination Subjects
2010/2011 School Year

Subject	School-Awarded				Diploma Examination				Final Course			
	Standard of Excellence		Acceptable Standard		Standard of Excellence		Acceptable Standard		Standard of Excellence		Acceptable Standard	
	ECS	Prov	ECS	Prov	ECS	Prov	ECS	Prov	ECS	Prov	ECS	Prov
English Language Arts 30-1	33.0	30.5	99.0	96.5	9.2	10.1	87.6	84.4	16.0	15.4	98.3	96.5
English Language Arts 30-2	12.3	10.3	97.2	91.9	10.4	9.1	90.9	88.6	7.0	6.2	97.6	95.6
Social Studies 30-1	35.9	35.2	99.7	98.1	15.3	14.9	87.5	82.8	21.8	20.5	98.8	96.9
Social Studies 30-2	10.0	12.4	98.1	93.3	14.2	15.9	88.6	85.6	8.9	10.6	97.3	95.0
Applied Mathematics 30	10.9	16.6	91.6	92.0	6.8	9.9	68.5	74.3	6.4	10.6	86.7	89.1
Pure Mathematics 30	34.6	40.6	94.5	94.7	25.7	28.7	80.3	81.0	26.9	32.0	91.2	91.9
Science 30	23.2	26.4	96.2	94.6	22.1	21.0	81.2	80.4	20.2	21.2	94.6	93.2
Biology 30	38.2	40.7	97.1	95.9	28.7	29.8	80.5	81.9	31.1	32.9	91.9	93.1
Chemistry 30	36.5	41.7	96.3	95.4	24.8	27.7	76.2	75.1	26.4	31.2	90.0	89.6
Physics 30	35.0	44.8	96.1	96.0	28.0	27.7	78.1	76.7	28.3	31.5	91.5	90.9
French Language Arts 30-1	56.0	52.0	100	99.1	2.7	14.3	89.3	95.3	16.0	25.8	100	99.4

Table 3
School-Awarded Marks
Acceptable Standard and Standard of Excellence
Five Years of Multiyear Results

Subject	Standard	2006/07		2007/08		2008/09		2009/10		2010/11	
		ECS	Prov	ECS	Prov	ECS	Prov	ECS	Prov	ECS	Prov
English Language Arts 30-1	Acceptable	97.1	96.7	98.6	96.9	98.5	97.0	98.9	96.6	99.0	96.5
	Excellence	34.6	32.2	37.1	32.7	32.3	31.2	36.2	31.1	33.0	30.5
English Language Arts 30-2	Acceptable	95.5	90.9	96.0	90.4	94.6	91.5	97.7	92.1	97.2	91.9
	Excellence	7.8	9.7	9.7	9.2	10.4	10.0	11.9	9.9	12.3	10.3
Social Studies 30-1	Acceptable	N/A	N/A	N/A	N/A	N/A	N/A	99.4	98.3	99.7	98.1
	Excellence	N/A	N/A	N/A	N/A	N/A	N/A	36.0	34.7	35.9	35.2
Social Studies 30-2	Acceptable	N/A	N/A	N/A	N/A	N/A	N/A	96.3	92.6	98.1	93.3
	Excellence	N/A	N/A	N/A	N/A	N/A	N/A	8.8	11.5	10.0	12.4
Applied Mathematics 30	Acceptable	84.8	90.8	83.4	90.4	88.1	91.4	90.4	91.5	91.6	92.0
	Excellence	6.8	14.5	7.8	14.3	8.2	15.9	8.0	15.7	10.9	16.6
Pure Mathematics 30	Acceptable	93.7	94.3	94.9	94.4	96.1	94.5	93.3	94.6	94.5	94.7
	Excellence	37.3	36.9	32.8	37.1	31.5	38.4	32.0	39.6	34.6	40.6
Science 30	Acceptable	89.3	91.8	89.1	92.5	92.6	94.3	95.5	94.5	96.2	94.6
	Excellence	11.2	21.2	13.2	20.5	15.4	23.2	15.1	24.6	23.2	26.4
Biology 30	Acceptable	94.9	95.5	96.2	95.4	96.4	95.6	97.5	95.8	97.1	95.9
	Excellence	36.2	37.4	38.1	37.6	37.5	37.5	39.2	39.7	38.2	40.7
Chemistry 30	Acceptable	N/A	N/A	N/A	N/A	96.6	95.8	95.8	95.5	96.3	95.4
	Excellence	N/A	N/A	N/A	N/A	33.1	39.4	32.3	41.5	36.5	41.7
Physics 30	Acceptable	N/A	N/A	N/A	N/A	97.1	96.4	96.2	96.8	96.1	96.0
	Excellence	N/A	N/A	N/A	N/A	36.0	44.3	37.0	45.1	35.0	44.8
French Language Arts 30-1	Acceptable	95.2	98.8	100	98.3	96.6	98.0	100	99.1	100	99.1
	Excellence	49.5	51.8	46.9	49.4	43.8	51.3	34.2	52.0	56.0	52.0

Table 4
Diploma Examination Marks
Acceptable Standard and Standard of Excellence
Five Years of Multiyear Results

Subject	Standard	2006/07		2007/08		2008/09		2009/10		2010/11	
		ECS	Prov	ECS	Prov	ECS	Prov	ECS	Prov	ECS	Prov
English Language Arts 30-1	Acceptable	90.2	87.7	89.1	87.1	87.7	86.1	87.9	84.9	87.6	84.4
	Excellence	21.3	19.0	18.5	15.5	14.2	12.3	11.1	10.1	9.2	10.1
English Language Arts 30-2	Acceptable	89.3	88.6	88.5	88.8	91.3	88.2	91.3	88.7	90.9	88.6
	Excellence	13.3	9.7	9.6	8.8	7.7	8.5	11.9	9.8	10.4	9.1
Social Studies 30-1	Acceptable	N/A	N/A	N/A	N/A	N/A	N/A	88.0	84.5	87.5	82.8
	Excellence	N/A	N/A	N/A	N/A	N/A	N/A	20.4	16.1	15.3	14.9
Social Studies 30-2	Acceptable	N/A	N/A	N/A	N/A	N/A	N/A	86.7	85.0	88.6	85.6
	Excellence	N/A	N/A	N/A	N/A	N/A	N/A	14.6	13.7	14.2	15.9
Applied Mathematics 30	Acceptable	70.7	77.6	65.6	76.3	72.0	79.4	75.2	77.2	68.5	74.3
	Excellence	8.8	12.1	7.2	10.7	6.8	13.5	10.3	12.6	6.8	9.9
Pure Mathematics 30	Acceptable	77.8	81.1	76.8	81.4	81.2	82.1	79.4	82.8	80.3	81.0
	Excellence	21.8	24.7	23.2	25.8	22.7	26.3	25.4	29.7	25.7	28.7
Science 30	Acceptable	80.7	87.2	86.1	88.6	84.3	86.0	79.2	80.1	81.2	80.4
	Excellence	13.4	18.0	20.2	21.7	16.0	20.9	21.5	22.8	22.1	21.0
Biology 30	Acceptable	82.4	83.5	81.7	82.3	82.0	83.0	80.8	81.4	80.5	81.9
	Excellence	27.3	27.4	23.6	26.3	26.9	26.6	25.5	28.1	28.7	29.8
Chemistry 30	Acceptable	N/A	N/A	N/A	N/A	73.9	76.3	77.9	79.0	76.2	75.1
	Excellence	N/A	N/A	N/A	N/A	22.5	27.7	24.9	29.9	24.8	27.7
Physics 30	Acceptable	N/A	N/A	N/A	N/A	76.5	79.3	73.2	74.0	78.1	76.7
	Excellence	N/A	N/A	N/A	N/A	18.4	23.1	17.2	20.4	28.0	27.7
French Language Arts 30-1	Acceptable	93.3	95.6	91.4	94.9	93.3	95.1	84.2	93.7	89.3	95.3
	Excellence	19.0	23.1	21.0	24.5	7.9	18.9	7.9	16.3	2.7	14.3

Table 5
Final Course Marks
Acceptable Standard and Standard of Excellence
Five Years of Multiyear Results

Subject	Standard	2006/07		2007/08		2008/09		2009/10		2010/11	
		ECS	Prov	ECS	Prov	ECS	Prov	ECS	Prov	ECS	Prov
English Language Arts 30-1	Acceptable	97.8	97.1	98.2	97.3	98.5	96.9	98.6	96.6	98.3	96.5
	Excellence	24.0	21.7	22.9	19.4	19.6	17.1	17.1	15.3	16.0	15.4
English Language Arts 30-2	Acceptable	97.3	95.8	97.6	95.4	97.2	95.7	98.7	95.8	97.6	95.6
	Excellence	5.1	5.8	5.6	5.5	5.2	5.3	7.0	6.2	7.0	6.2
Social Studies 30-1	Acceptable	N/A	N/A	N/A	N/A	N/A	N/A	98.8	97.3	98.8	96.9
	Excellence	N/A	N/A	N/A	N/A	N/A	N/A	25.1	21.2	21.8	20.5
Social Studies 30-2	Acceptable	N/A	N/A	N/A	N/A	N/A	N/A	96.6	94.5	97.3	95.0
	Excellence	N/A	N/A	N/A	N/A	N/A	N/A	8.7	9.1	8.9	10.6
Applied Mathematics 30	Acceptable	84.6	89.9	78.3	88.4	85.7	90.6	86.7	89.6	86.7	89.1
	Excellence	6.6	10.8	6.7	10.3	7.2	12.5	7.3	11.5	6.4	10.6
Pure Mathematics 30	Acceptable	89.8	91.9	90.2	92.1	92.8	92.4	90.7	92.6	91.2	91.9
	Excellence	25.5	28.8	26.2	29.8	25.5	30.1	27.7	33.2	26.9	32.0
Science 30	Acceptable	89.8	93.9	91.1	94.4	93.2	94.5	91.2	92.3	94.6	93.2
	Excellence	11.8	16.9	15.6	19.0	13.2	19.4	13.0	20.9	20.2	21.2
Biology 30	Acceptable	91.9	93.7	92.3	93.2	93.5	93.4	94.1	93.0	91.9	93.1
	Excellence	29.7	30.5	27.0	29.3	29.6	29.8	29.9	31.6	31.1	32.9
Chemistry 30	Acceptable	N/A	N/A	N/A	N/A	88.5	89.9	90.8	91.0	90.0	89.6
	Excellence	N/A	N/A	N/A	N/A	24.4	31.0	26.2	33.4	26.4	31.2
Physics 30	Acceptable	N/A	N/A	N/A	N/A	92.4	92.8	91.8	91.5	91.5	90.9
	Excellence	N/A	N/A	N/A	N/A	23.6	29.8	23.6	26.7	28.3	31.5
French Language Arts 30-1	Acceptable	98.1	99.4	98.8	98.9	97.8	99.0	100	99.6	100	99.4
	Excellence	25.7	32.5	29.6	34.2	19.1	30.4	17.1	28.2	16.0	25.8

Table 6
Participation Rates
Percentage of Third Year Students Completing the Course
Five Years of Multiyear Results

Subject	2006/07		2007/08		2008/09		2009/10		2010/11	
	ECS	Prov	ECS	Prov	ECS	Prov	ECS	Prov	ECS	Prov
English Language Arts 30-1	59.1	59.8	59.3	59.1	59.0	59.8	59.0	60.0	56.9	60.0
English Language Arts 30-2	26.1	26.1	25.2	26.8	26.9	27.5	28.4	28.2	32.0	29.2
Social Studies 30-1	N/A	N/A	N/A	N/A	N/A	N/A	49.9	49.8	52.5	52.3
Social Studies 30-2	N/A	N/A	N/A	N/A	N/A	N/A	28.2	30.5	34.0	34.8
Applied Mathematics 30	17.9	21.5	19.0	21.3	21.2	22.0	18.0	21.8	21.1	22.1
Pure Mathematics 30	48.6	46.4	48.1	45.9	47.5	45.8	48.4	46.0	48.7	46.9
Science 30	7.1	7.7	11.6	8.3	13.4	9.3	12.7	10.1	16.3	10.0
Biology 30	46.4	43.9	44.4	43.3	41.8	44.3	45.9	45.3	44.6	46.7
Chemistry 30	N/A	N/A	N/A	N/A	32.3	33.3	41.4	39.1	39.0	39.8
Physics 30	N/A	N/A	N/A	N/A	19.1	19.8	23.0	22.3	21.8	22.9
French Language Arts 30-1	4.4	2.9	3.1	2.9	3.9	3.0	3.4	3.2	3.3	3.0